

ROCKVILLE

RPG2x12

PORTABLE PA SYSTEM MIXER/AMP w/12" SPEAKERS, STANDS, MICS, and BLUETOOTH

OWNER'S MANUAL

**ATTENTION:
WATCH THIS VIDEO BEFORE FIRST USE!**

Who reads manuals?

Scan the **QR code** or go to **rockvillesupport.com/rpg2x12** to access how-to video(s), the owner's manual, and other important information you may need to get the most out of your item.

If you prefer written instructions, please read ahead!

With Rockville you get many options.



Missing items? If you ordered a bundle that includes more than one product and you are missing part of your bundle then it just means your order shipped from two different warehouses. You will receive the remaining items very soon. If you have any concerns or inquiries, feel free to call our customer support center at 1-646-758-0144, 24 hours a day/7 days a week.

Thank you for purchasing this Rockville RPG2x12 Portable PA System. Please read this manual carefully for proper use of your Rockville RPG2x12 Portable PA System. Should you need assistance please call our technical help line at 1-646-758-0144, 24 hours a day/7 days a week.

Includes:

- (2) 12" ABS molded PA speaker
- (1) 8-Channel powered mixer w/remote control (in separate box)
- (2) Foldable speaker stands
- (2) 16 foot 1/4" TS to 1/4" TS right angle speaker cables (100% OFC Copper)
- (2) Metal wired microphones with (2) Mic clips
- (2) 10 foot XLR to XLR mic cables (100% copper)

IMPORTANT SAFETY INSTRUCTIONS



- To reduce risk of electric shock, never open the unit. There are no user serviceable parts, refer service to the Rockville service center.
- Do not expose this unit to any kind of moisture.
- Please ensure that the unit is situated in a properly ventilated area.
- Make sure the unit is placed on a level and stable surface.

TABLE OF CONTENTS

SETUP GUIDE	4
Stands and Speakers	
CONNECTIONS	5
Microphones and Line Inputs	
Media Playback Sources	
Power	
GENERAL USE TIPS	6
Microphone Usage	
Avoiding Irritating Feedback	
BASIC OPERATION	7
Setting Controls and Turning Unit On	
Adjusting Gain and Volume Controls	
Adjusting Tone Controls	
EQUALIZATION AND EFFECTS	8
Graphic Equalizer	
Effects Usage	
BLUETOOTH AND MEDIA	9
Bluetooth Operation	
Supported Audio File Types	
Media Source Playback	
FUNCTIONS	10-11
FEATURES and SPECIFICATIONS	12-13
TROUBLESHOOTING	14
FCC STATEMENT	15

SETUP GUIDE

SAFETY FIRST

Much of the setup of the Rockville RPG2x12 is similar to the setup of other sound systems, and many aspects require plain common sense. Safety should always be your first concern. Always use grounded outlets and three-wire extension cords. Run sound system cables in a way to prevent the danger of tripping and tape them down if needed. Place the speaker stands and mixer on a solid, level surface. Following these guidelines will help prevent personal injury and equipment damage, ensuring years of trouble-free use.

Stands and Speakers

Remove the speaker stands from the case. Be sure the legs on the stand are fully extended to provide a stable base for the speakers and are positioned on a level surface. Tighten the thumbscrew on the base so that it is snug, but do not overtighten (figure 1). Raise the speaker stands to the desired height, tighten the thumbscrew and install the safety pin as shown in figure 2.

fig.1

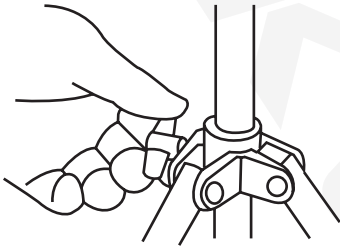
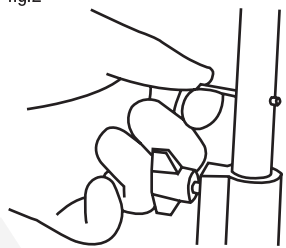


fig.2



Place speakers on stands and position them so that they will face toward the audience and away from the microphones. Connect speaker cables from the jack on the lower front of the speaker to the speaker outputs on the back of the mixer. Connect the left speaker to the LEFT OUTPUT and the right speaker to the RIGHT OUTPUT.

WARNING!

Only connect the included speakers to the mixer. The Rockville RPG2x12's speakers provide optimal load for the powered mixer and using other speakers may result in equipment damage.

CONNECTIONS

Microphones and Line Inputs

The RPG2x12's powered mixer is designed to work with any good-quality, balanced, dynamic or condenser microphone. Connect the included microphone(s) to the XLR (three-pin) input connectors as shown in figure 1. If using more than one microphone, connect them in the order they will be on stage for easy adjustment to each microphone. To connect a line level device such as a keyboard, use a 1/4" instrument cable and insert into the corresponding 1/4" jack as shown in figure 2.

fig.1

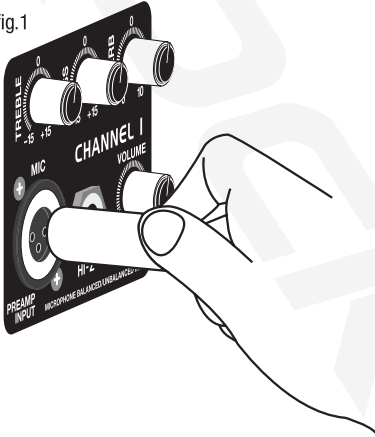
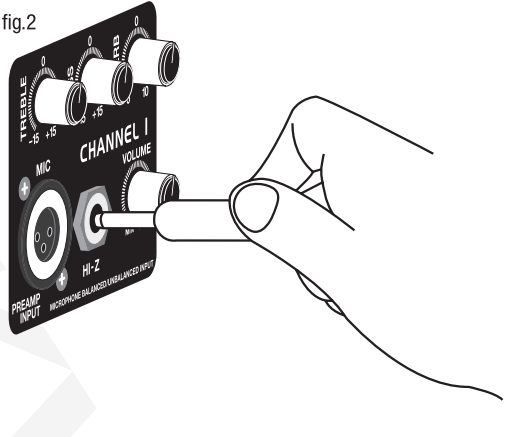


fig.2



Media Playback Sources

The RPG2x12's powered mixer will accept various media playback devices.

- To connect an MP3 player or smart phone with media playback capabilities use the LINE IN RCA inputs.
- To connect a turntable, a CD player, or any other line level device use any of the 1/4" Hi-Z jacks or the RCA LINE IN input.
- To connect a USB memory stick or SD/MMC card use the corresponding inputs on the mixer panel. Use the screen and controls to navigate and playback audio files.
- To connect via Bluetooth, simply pair your device with the mixer.

Power

Connect the power cord to the receptacle on the back panel of the unit, and then to a suitable electrical outlet. If an extension cord is required, make sure it is a three-wire cord with an intact ground pin to preserve the safety ground.

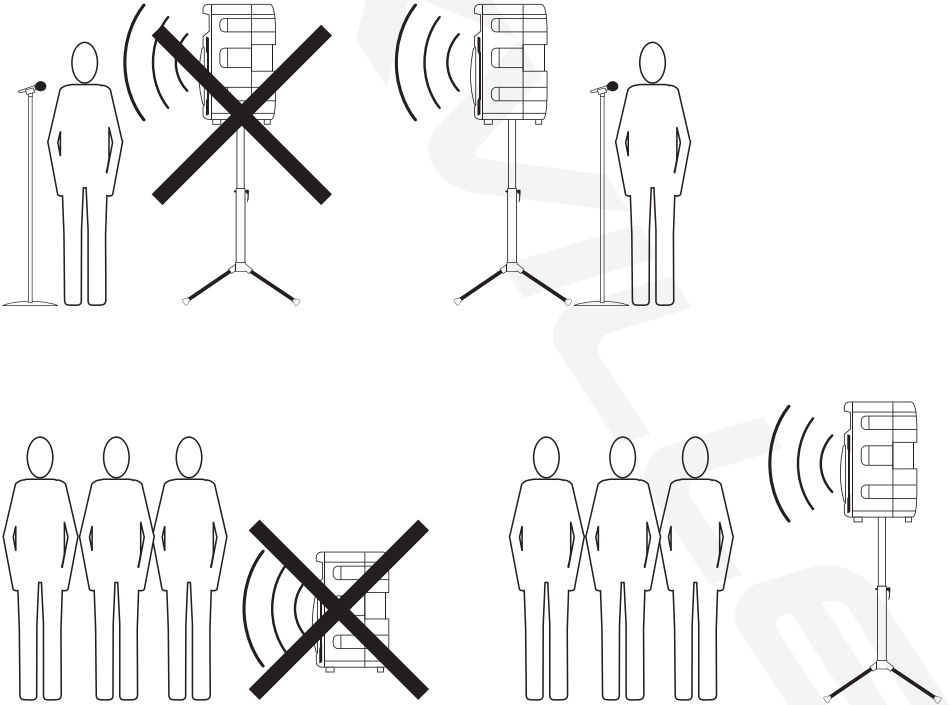
GENERAL USE TIPS

Microphone Usage

When practical, a single microphone is preferred. Additional microphones pick up more sound from the speakers and each mic must then be turned down to prevent feedback. However, if you have difficulty balancing the level of different individuals with one mic or if you still cannot get sufficient gain, using more mics can offer an advantage. For example, giving several singers their own microphone allows placement of the microphones much closer to each singer. This increases the volume of the sound at the mic and far outweighs any detrimental effect from using multiple mics. It also allows the volume of each mic to be adjusted separately for proper balance.

Avoiding Irritating Feedback

The placement of your microphone is critical in avoiding feedback through the RPG2x12. Never set up your microphone in front of the speaker. Always set up your microphone behind the speaker. When approaching the speaker to make any adjustments, we recommend approaching the speaker from the rear and not walking directly towards the front of the speaker.



BASIC OPERATION

Setting Controls and Turning Unit On

Before turning on power, make sure all speakers, microphones, and other input devices are connected. Set Master Volume con to the 12 o'clock position and all other controls all the way down. Turn power on by placing the ON/OFF switch located on the back of the mixer to the ON position.

Adjusting Gain and Volume Controls

The optimal setting for the powered mixer and included speakers is marked on the MASTER VOLUME control. Adjust the CHANNEL VOLUME control until the desired volume is achieved. If the desired volume is reached with the CHANNEL VOLUME turned down to one of the first three positions, turn the MASTER VOLUME down so you can turn the CHANNEL VOLUME up. If the desired volume is achieved when the CHANNEL VOLUME is close to max then raise the MASTER VOLUME so you can lower the CHANNEL VOLUME. These are the same as any basic mixer functions.

Adjusting Tone Controls

For each active channel adjust the BASS and TREBLE controls to achieve desired sound. Use moderation when making these adjustments, as extreme high settings of any of these controls can lead to a distortion of the sound and an increased chance of feedback on microphone inputs.

HIGH

This High EQ shelving type of active tone control varies the treble frequencies ($\pm 15\text{dB}$ at 12kHz) and is designed to remove noise or add brilliance to the signal, depending on the quality of the source.

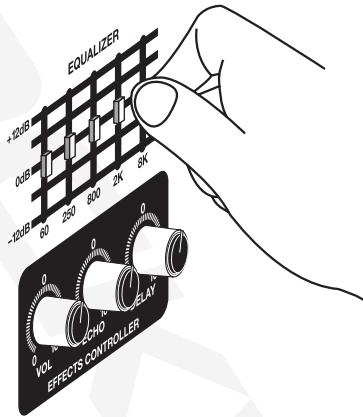
LOW

A shelving type of EQ that varies the bass frequency levels ($\pm 15\text{dB}$ at 80Hz). Low EQ adds depth to thin-sounding signals or cleans up the muddy ones. As with any EQ, use sparingly. Too much of this EQ can give you a booming bottom end.

EQUALIZATION AND EFFECTS

Graphic Equalizer

Unlike the BASS and TREBLE controls on each channel that adjust only that specific channel's input signal, the five-band equalizer adjusts the tonal balance of all the signals going through the powered mixer. It offers control over 60Hz, 250Hz, 800Hz, 2kHz, 8kHz frequencies ($\pm 12\text{dB}$) and offers flexibility in adjusting sound. This equalizer also helps reduce or eliminate acoustic feedback.



Effects

This unit has a built-in digital delay. It's a reverb effect and features DELAY, ECHO, and VOLUME controls. The effect affects all channels (fig. 1) and can be individually controlled at each channel using the REVERB control (fig. 2).

fig.1

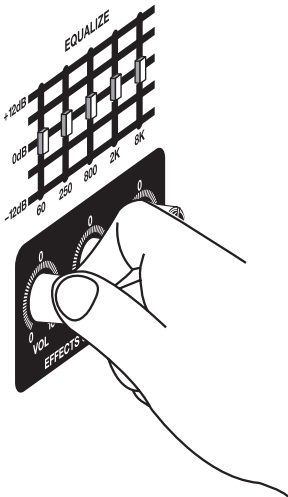
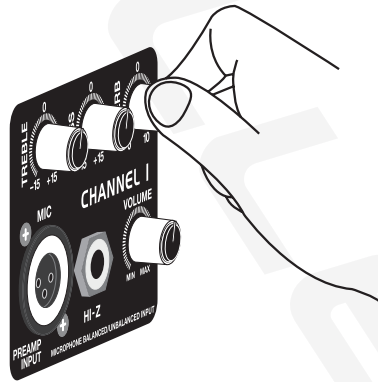


fig.2



BLUETOOTH AND MEDIA

Bluetooth Operation

To listen to the music via the Bluetooth wireless connection, you must first pair (link) your RPG2x12 with your Bluetooth phone and/or music device. Turn off any Bluetooth devices previously paired with the RPG2x12. Turn on the Bluetooth feature on your phone or music device. Make sure the RPG2x12 is ready for a Bluetooth connection. The Bluetooth mode must be active. The LCD will say, "Bluetooth input". Place your phone or music device in Bluetooth search mode. The phone or music device will begin searching for the RPG2x12. Select the unit, which should appear as Rockville, from the search results on your phone or music device. Select Ok or Yes to pair with your phone or music device.

Supported Audio File Types

.WAV

.MP3

.WMA

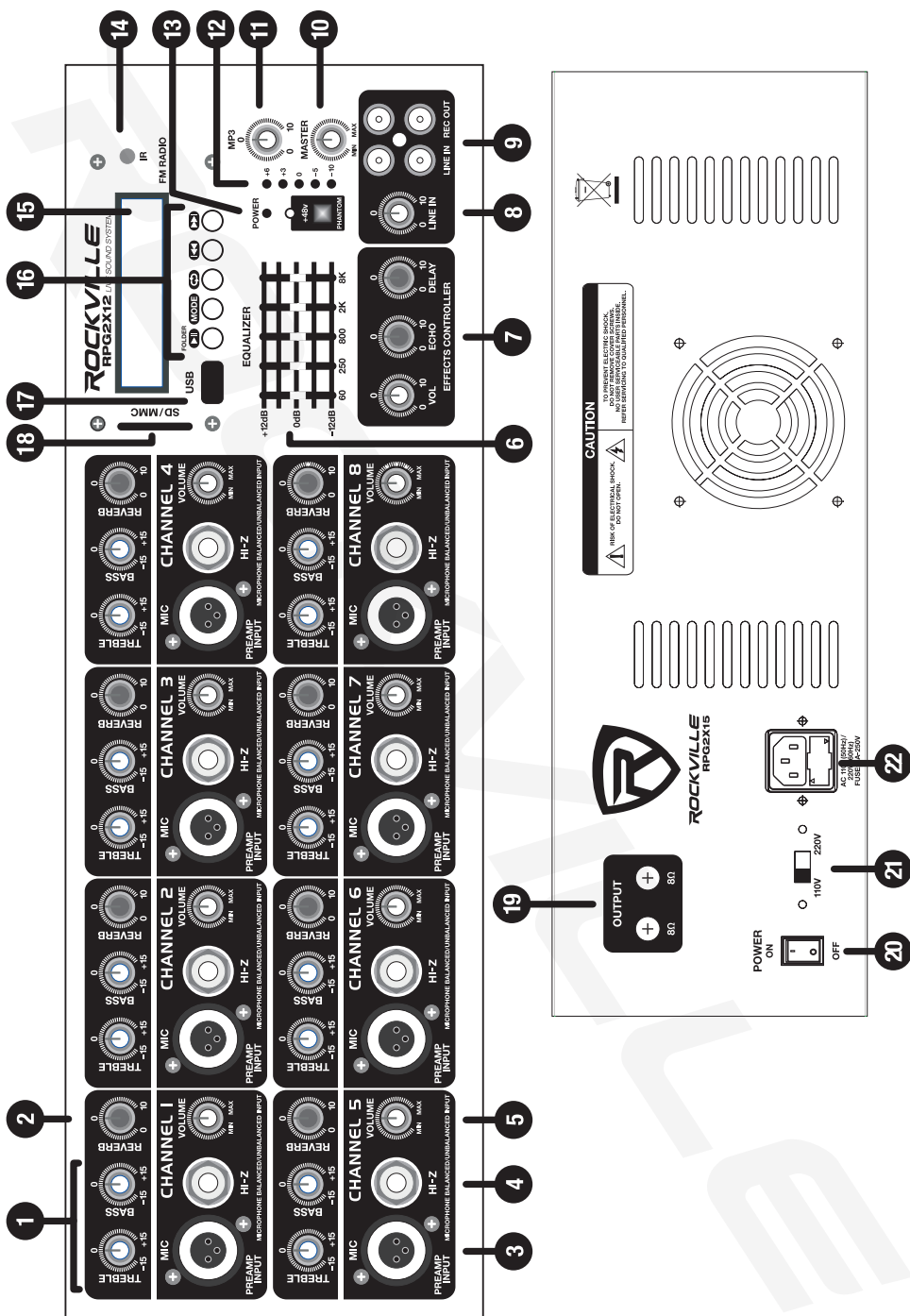
Media Source Playback

Hook up your media source device as mentioned previously. Which inputs are active will be displayed on the LCD screen. Use the controls on the source device for play, stop, forward and reverse functions. Adjust corresponding channel controls on the mixer for desired sound. For media playback using an MP3 player, smartphone, or other similar device use the MODE button to navigate to the proper setting. Connect using a stereo 1/4" cable to RCA or a 3.5mm to RCA cable and use the source device for playback controls. When a device is connected to a 1/4" jack the RCA jacks are automatically disabled. For audio file playback from a USB memory stick, use the MODE button to navigate to the USB setting. Use the LCD screen and controls to navigate and playback supported audio files. Use the controls on the mixer for play, pause, forward and reverse. Follow the same procedure for SD/MMC input.

If you do not choose to navigate or select a certain file the RPG2x12 will play the files in the order they are stored on your USB or SD/MMC memory device. Non-audio files will show up in your navigation but will have no audio playback if selected. Only audio files can be selected for playback.

Note: The RPG2x12 does not allow playback through multiple media inputs simultaneously.

FUNCTIONS



1. Bass and Treble controls. Adjusts High and Low frequencies for the corresponding channel.
2. Digital Delay Effect (reverb) control Reverb control.
3. XLR microphone input. We recommend using professional balanced dynamic, condenser or ribbon mics as they are least likely to be affected by interference. Low cost, high impedance mics can be used, however the level of background noise is higher since an unbalanced circuit is far more susceptible to interference.
4. Balanced ¼" TRS input. It accepts signals from a variety of sources such as keyboards, electronic drums, tape recorders, mixers, etc. It will not process microphone input. When you use an unbalanced ¼" TS plug, the line input automatically turns the ring into ground.
5. Adjusts gain level for the corresponding channel.
6. 5 band equalizer. Adjust frequencies to $\pm 12\text{dB}$
7. Digital delay effect (echo) control panel.
 - The Volume knob adjusts the mix level of the effect sound.
 - The Echo knob controls the echo interval.
 - The Delay knob controls the time interval of the delay.
8. Line In volume control.
9. RCA Line In/Record Out jacks.
10. Master Volume control.
11. MP3 (USB/SD/MMC input) volume control.
12. Volume level meter.
13. Power indicator LED/Phantom Power Button and indicator LED.
14. IR receptor.
15. LCD Screen.
16. MP3 Player controls.
 - Press Play button once to play track, press again to pause. Press and hold to select folder when in USB/SD mode.
 - Mode control switches between input modes: Bluetooth, USB, SD/MMC.
 - Repeat Button.
 - Previous/Next track buttons also allow you to move between tracks.
17. USB port.
18. SD/MMC port.
19. ¼" speaker outputs.
20. Power switch.
21. Variable voltage selector switch (110v/220v).
22. IEC AC power socket.

FEATURES AND SPECIFICATIONS

Speakers:

- Two 12" premium 8 ohm professional long throw woofer with 2" voice coils, and 40 Oz magnets!
- State-of-the-art 1" titanium diaphragm driver tweeter
- 350 Watts RMS/700 Watts Program Power/1400 Watts Peak
- Molded plastic speaker cabinet for increased sound quality
- Two-way cabinet architecture
- Horizontal/Vertical position for use as stage monitor or PA speaker
- Impedance: 8 Ohm
- Pole mountable
- Frequency range: 60Hz – 20kHz
- Sensitivity: 93dB
- Input connections: two 1/4" jacks and one speakON jack
- Maximum SPL: 112dB
- Powder-coated steel grill
- Rubber feet protect the enclosures

Microphones

- Two Rockville RMM-XLR Dynamic cardioid microphones designed for stand-mount application
- Steel Mesh Grill
- On/Off Switch
- Rugged Metal Construction
- Natural Sound Reproduction
- Beautiful Black Finish (The perfect combination of matte and shiny black finish)
- Frequency Response: 50Hz – 15kHz
- Super Cardioid Polar Pattern
- Impedance 600 Ohm $\pm 5\%$
- Sensitivity -60dB ± 3 dB (0dB=1V/Pa at 1KHz)

Mixer

- 8 Channel Powered Mixer with 1400 watt amplifier with built-in Bluetooth connectivity
- 17 Inputs
- 2 Speaker outputs and line output to connect a subwoofer or more speakers
- USB/SD Input

- MP3 Playback
- LCD Display
- 350 Watts RMS/600 Watts Program Power/1400 Watts Peak into 4 ohm (2 x 8 ohm) speakers
- 8 balanced XLR and 1/4" microphone inputs
- Tape/CD Line inputs
- Master volume control
- Bass, treble, and reverb effect controls on each channel
- Reverb effect level control on each channel
- Digital delay effect with independent level control
- 48 volt Phantom power for condenser mics
- 5 band graphic equalizer
- Record Out for taping
- RF interference protection on all inputs
- Aux Send Output: -10 dBv nominal, 1k ohms
- Tape Rec Output: -10 dBv nominal, 1k ohms
- Input impedance: Low-Z Mic: 1k ohms
High-Z Line: 10k ohms
Tape Input: 10k ohms
- Input Channel Equalization: $\pm 15\text{dB}$ @ 5kHz
- Protection Circuit: Power-on mute delay (2 seconds)
- 110/220 volt switchable
- Built-in FM radio

TROUBLESHOOTING

PROBLEM	CHECK	CORRECTION
No sound (LCD not lit)	Is power switch on? Is line cord connected to live power outlet?	Turn power switch on. Connect power cord to live outlet
No sound (LCD not lit)	Are MASTER and CHANNEL GAIN controls up?	Adjust both MASTER and CHANNEL VOLUME controls upward to desired level. Check speaker connections. Turn mic switch on. Check mic or sound source connection.
No Effects	Are the channel EFFECT controls turned up? Are the master EFFECT controls turned up?	Make sure the channel effect control is turned up. Check the master effect controls. Adjust master effect controls until audio effect is heard.
Files on USB memory device will not play back	Is the file cued for playback? Are the audio files the proper format?	Check that you are in the proper input mode. Make sure your audio files are the correct format. See the list of supported audio formats mentioned previously in this manual.
Loud howling or squeal from speakers	If it goes away when the CHANNEL VOLUME or MASTER VOLUME controls are turned down, then it is acoustic feedback.	Reduce microphone gain. Reposition microphone behind or farther from speakers.
Sound is distorted	Is the CHANNEL LEVEL at a very high setting?	Reduce CHANNEL LEVEL and increase MASTER VOLUME

FEDERAL COMMUNICATIONS COMMISSION COMPLIANCE INFORMATION

Responsible party name: Rockville

Address: 600 Bayview Ave.
Entrance A
Inwood, NY 11096

Hereby declares that the product(s) RPG2X12 Portable PA System complies with FCC rules as mentioned in the following paragraph:

This device complies with Part 15 of the FCC rules. Operation is subject to the following two conditions: (1) this device may not cause harmful interference, and (2) this device must accept any interference received, including interference that may cause undesired operation.

Note: This equipment has been tested and found to comply with the limits for a Class B digital device, pursuant to Part 15 of the FCC rules. These limits are designed to provide reasonable protection against harmful interference in a residential installation. This equipment generates, uses and can radiate radio frequency energy and, if not installed and used in accordance with the instructions, may cause harmful interference to radio communications. However, there is no guarantee that interference will not occur in a particular installation. If this equipment does cause harmful interference to radio or television reception, which can be determined by turning the equipment off and on, the user is encouraged to try to correct the interference by one or more of the following measures:

- Reorient or relocate the receiving antenna.
- Increase the separation between the equipment and receiver.
- Connect the equipment to an outlet on a circuit different from that to which the receiver is connected.
- Consult the dealer or an experienced radio/TV technician for help.

Visit us at:

RockvilleAudio.com