

# ROCKVILLE

## TITAN PORTABLE ARRAY

BATTERY POWERED PA SPEAKER  
SYSTEM w/8" SUBWOOFER

### OWNER'S MANUAL

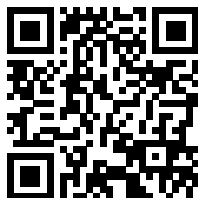
## ATTENTION:

**VISIT THE ROCKVILLE SUPPORT SITE FIRST!**

Scan the **QR code** or go to **rockvillesupport.com/titan-portable-array** for essential information, guides (video and/or written), and tips to make the most out of your purchase.

**If you prefer written instructions, please read ahead!**

*With Rockville you get many options.*



**Missing items?** If you ordered a bundle that includes more than one product and you are missing part of your bundle, then it just means your order shipped from two different warehouses. You will receive the remaining items very soon. If you have any concerns or inquiries, feel free to call our customer support center at 1-646-758-0144, 24 hours a day/7 days a week.

Thank you for purchasing this Rockville product. Please read this owner's manual carefully for proper use of your Titan Portable Array (TPA). Should you need assistance, please call our technical help line at 1-646-758-0144, 24 hours a day/7 days a week.

## Included

- 8" Powered subwoofer with built-in mixer amplifier and rechargeable battery
- (3) Column speakers – 1 column with 4 drivers, and 2 columns are empty and are used to elevate the loaded one
- Travel bag with carry handles for the subwoofer and column speakers,
- 5 Foot power cable
- Owner's manual

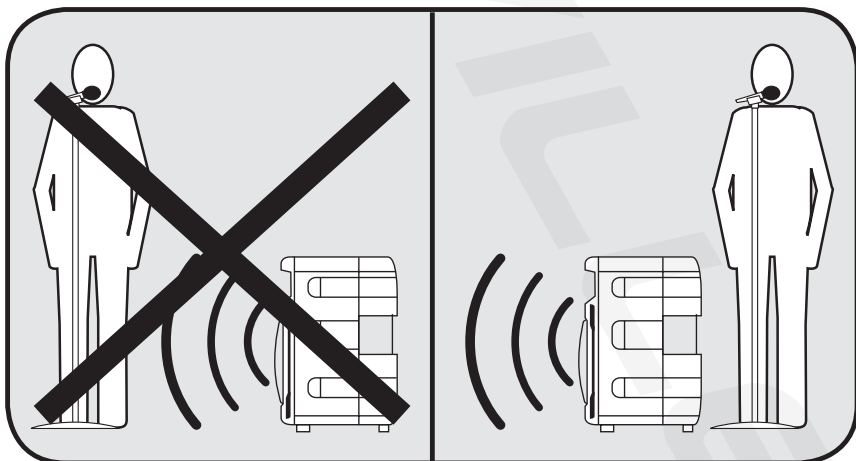
## IMPORTANT SAFETY INSTRUCTIONS



- To reduce risk of electric shock, never open the unit. There are no serviceable parts. Please refer service to the Rockville service center.
- Do not expose this unit to any kind of moisture.
- Please ensure that the unit is situated in a properly ventilated area.
- Make sure the unit is placed on a level and stable surface.

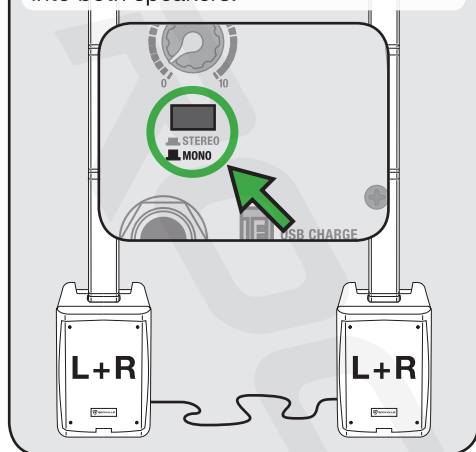
## How to Avoid Irritating Feedback

The placement of your microphone is critical in avoiding feedback through your Titan Portable Array. Never set up your microphone in front of the speaker. Always set up your microphone behind the speaker. When approaching the speaker to make any adjustments, approach the speaker from the rear and do not walk directly toward the front of the speaker.

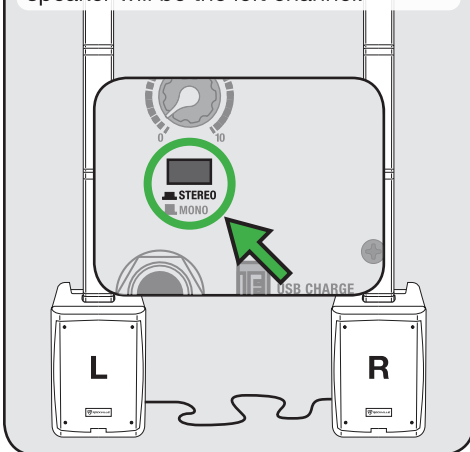


## Using the Stereo/Mono Button

When the button is set to **MONO**, the left and right channels will be played into both speakers.



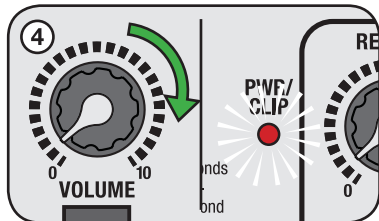
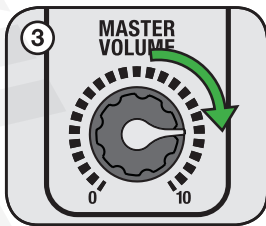
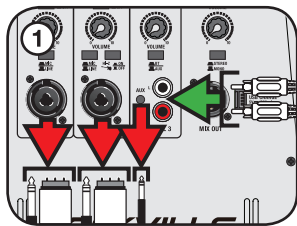
When the button is set to **STEREO**, the signal sent via mix out to the second speaker will be the left channel.



## Setting Level Controls

It is best practice to set your input volume (gains) in this manner:

1. Unplug all inputs except for the one you wish to set the gain for. In this instance, the RCA line inputs.
2. Set the line level input device volume (smartphone, tablet, MP3 player, etc.) to 60%.
3. Set the MASTER VOLUME to 75%.
4. Slowly turn up the AUX volume control. As soon as the CLIP indicator LED goes on or you hear any distortion, turn AUX volume down one or two notches.



**! PLEASE NOTE** Because mixers feature two volume controls (channel and master), when connecting one via the XLR line in port, the procedure is slightly different. The TPA MASTER VOLUME should be set to 50% and the CHANNEL 1 and 2 volume controls should be set to 50%. Set the mixer master volume to 50% and make the adjustments in step 4 on the mixer channel level control. If after making these adjustments the signal still isn't strong enough, you can additionally boost the signal by turning up the CHANNEL 1 and 2 volume controls.

When adjusting the Mic Volume control, you must speak into the microphone and adjust the level control as needed. This is because adjustments to the mic input are a matter of mic volume in relation to the music volume and not necessarily a clipping issue.

## Microphone Presentations

Your TPA features 2 balanced microphone inputs accessible via combo XLR/¼" TRS inputs.

1. Switch OFF your TPA.
2. Plug your microphone into either the CHANNEL 1 or CHANNEL 2 XLR input. Make sure to set the MIC/LINE selector to MIC.
3. Switch ON your TPA.
4. Refer to the "Setting Level Controls" section of this manual for instructions on how to properly adjust the input volume (gains). Always stand behind the TPA when making your microphone adjustments to avoid feedback distortion.

## Line Input

You can connect an additional stereo signal source (such as CD players, DVD music players, MP3 players, guitar, etc.) without the use of a mixer console. Simply plug the device directly into one of the combo XLR/¼" TRS inputs.

1. Switch OFF your TPA.
2. Connect the input source to either the channel 1 or channel 2 combo XLR/¼" TRS input using an XLR or ¼" TRS cable. Make sure the MIC/LINE selector switch is set to LINE. To connect a guitar, use channel 2 and make sure to press the HI-Z button.
3. Switch ON your TPA.
4. Refer to the "Setting Level Controls" section of this manual for instructions on how to properly adjust the input volume (gains).

## Wireless Speaker Linking

The TPA features true wireless stereo (TWS) Bluetooth linking. This means you can link 2 units together to play in stereo wirelessly.

1. Switch ON both TPA units and make sure their BT/AUX selectors are set to BT.
2. Press and hold the BT/TWS button on both of the units at the same time for 2 seconds. The BT indicator LEDs on the units will flash intermittently. Once they are connected, both indicator LEDs will remain lit.
3. Follow the pairing procedures detailed in step 4 of the Bluetooth Pairing section below.
4. All playback functions are controlled by your BT device. You can set the gain or volume on the units independently.
5. To disconnect, press the BT/TWS button on either one of the units for 2 seconds.

## Bluetooth Pairing

To connect your iPod, iPhone, MP3 player, Android phone, or any other Bluetooth-capable device, follow the steps listed below.

1. Switch ON your TPA and make sure the BT/AUX selector is set to BT.
2. Turn on the Bluetooth feature on your device and ensure that it is discoverable.
3. Press and hold the BT/TWS button for 2 seconds. The BT indicator LED will flash intermittently.
4. Look for "TITAN PORTABLE ARRAY" on the list of available devices and select it. The TPA will automatically connect to your device. Once connected, the BT indicator LED will remain lit.
5. When the unit is in BT mode and a previously paired device is nearby, it will connect to it automatically. To disconnect press and hold the BT/TWS button for 2 seconds. If you have problems pairing your device, please check the troubleshooting section on page 9.

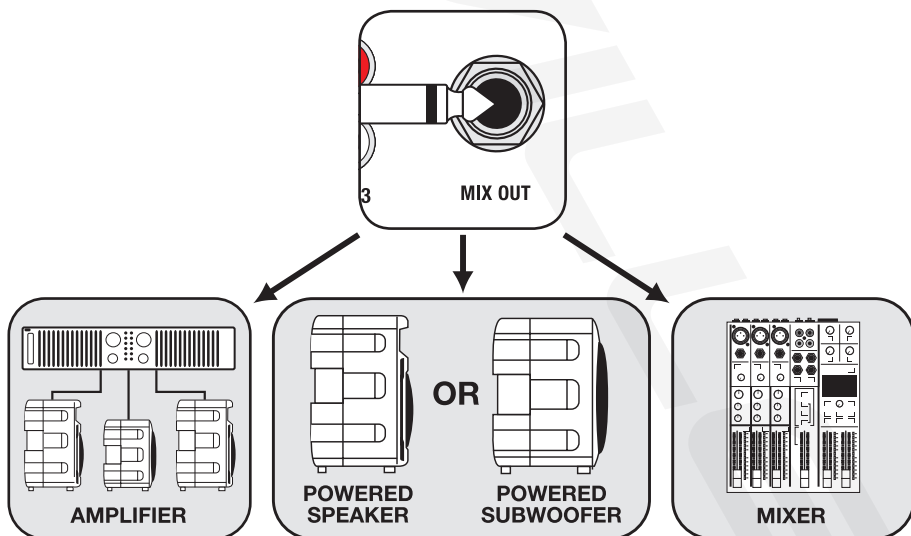
## AUX Input

You can connect a stereo signal source (such as a CD player, DVD music player, MP3 player, etc.) into either the RCA inputs or the 3.5mm jack.

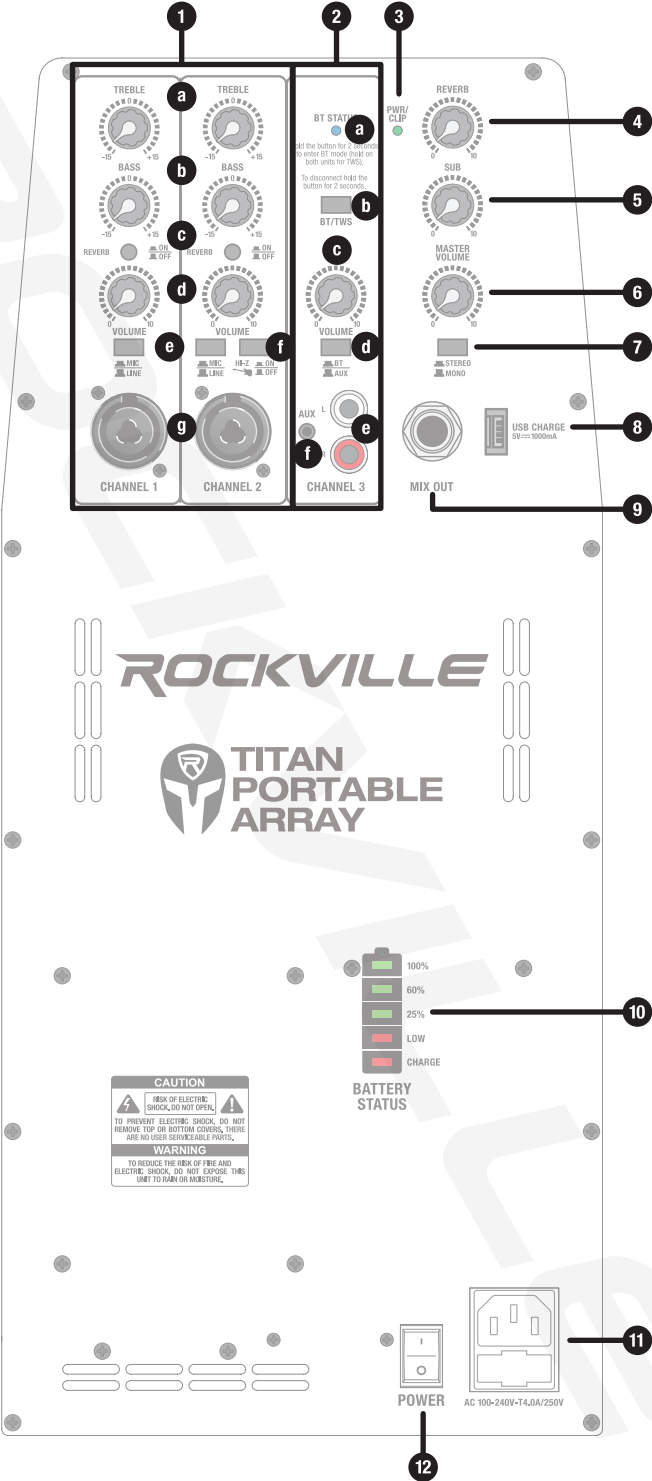
1. Switch OFF your TPA.
2. Connect the music source to the RCA inputs or the 3.5mm jack.
3. Switch ON your TPA and make sure the BT/AUX selector is set to AUX.
4. Refer to the "Setting Level Controls" section of this manual for instructions on how to properly adjust the input volume (gains).

## Line Out Unbalanced Connection (1/4" TS)

The MIXED LINE OUT 1/4" TS port allows you to output the amplifier signal to a subwoofer, another powered speaker, and an amp or mixer. The output should be connected to the input of the external device using an 1/4"-to-XLR or 1/4"-to-1/4" TS cable. We recommend you use high-quality cables.



Functions



# Functions

1. MIC/LINE input section
  - a. TREBLE
  - b. BASS
  - c. REVERB: on/off button
  - d. VOLUME: controls the MIC/LINE level.
  - e. MIC/LINE selector switch: When connecting a microphone, make sure that the Line/Mic button is in the “down” position. When connecting a line level device, make sure that the specific button is in the “up” position.
  - f. Hi-Z: press this button when an electric guitar or electric bass with passive audio pickup is connected to the channel 2 1/4” jack .
  - g. Combo XLR/ 1/4” TRS inputs
2. BT/AUX input section
  - a. BT status indicator LED
  - b. BT/TWS button
  - c. VOLUME: controls the BT/AUX level.
  - d. BT/AUX selector switch
  - e. L/R RCA auxilliary input
  - f. 3.5mm auxilliary input
3. POWER/ CLIP LED indicator: Will illuminate green when the unit is receiving power. Will Illuminates red when there is a power overload. This indicates that limiting has taken place to protect and avoid damage to the amplifier or speaker. Continuously over driving the system will cause distortion and may cause damage to the amplifier and/or the speaker.
4. REVERB level input control
5. SUB volume control
6. MASTER VOLUME
7. STEREO/MONO selector button: determines the output signal type.
8. USB 5V/1A charging port
9. 1/4” Line output
10. Battery status LED indicators
11. IEC AC input port w/user serviceable fuse
12. Power switch

## Features

- 1200W Peak power/300W RMS (continuous)
- Completely portable yet it has enough power to fill a room 3K square foot
- Wireless stereo linking (TWS) of 2 systems to fill larger venues
- Perfect for outdoor performances, street parties, band practice, small gigs, and more
- Bluetooth 5.0 chip allows crystal clear music streaming with 30 foot max range
- Rechargeable battery lasts 6 hours at high volume, 12 at mid volume, and 18 at low volume
- Fast 3 hour charge time
- Clean balanced sound quality tuned using DSP to be very flat with clear vocals and thumpy deep bass
- LOWS: 8" Subwoofer (200W RMS power dedicated to the sub)
- Sub has a large 40 Oz magnet and 2" voice coils
- HIGHS/MIDS: (4) 2.75" drivers(100W RMS power dedicated to the drivers)
- Clean and balanced sound even at high volume levels
- Wide angle sound dispersion fills a room with sound
- Frequency response: 40Hz – 20KHz
- Input 1: Mic / Line level selectable: XLR / 1/4" Combo jack
- Input 2: Line/Mic/Guitar level selectable: XLR / 1/4" Combo jack
- Input 3: Line level RCA/3.5mm input
- 1/4" TS output allows you to connect another speaker or amplifier
- Limiter allows the speaker to play at extremely high volumes while limiting the frequencies causing clipping
- USB charger (5V/1A) will charge your phone or other portable device
- Class D amplifier is extremely efficient with a low current draw and approximately 90% of energy is turned into clean amplifier power
- Built-in dual carry handles on the subwoofer unit
- Weight of Sub: 22.93Lbs
- Dimensions of sub: 11.02" x 13.38" x 14.76"
- Dimensions of each column: 3.15" x 3.54" x 15.35"



## Troubleshooting

PROBLEM	SOLUTION
No power	<ol style="list-style-type: none"> <li>1. Make sure the unit is plugged in and the power switch is in the ON position.</li> <li>2. Check that the power cable is plugged in tightly to the unit.</li> <li>3. Check and replace the fuse if necessary.</li> <li>4. If people or equipment tend to step on and roll over or stretch your power cable, it can get damaged. Always try a second cable to test for shorts in original cable. Dispose of damaged power cables immediately.</li> </ol>
No sound/ distorted sound	<ol style="list-style-type: none"> <li>1. Check that all appropriate cables are plugged in correctly.</li> <li>2. Check the Levels settings. Refer to the “Setting Level Controls” section on page 4 of this manual for instructions on how to properly adjust the input level controls.</li> <li>3. If you are using the MIC/LINE section inputs, make sure the MIC/LINE button is set to the correct input source.</li> <li>4. Be sure your microphone is on and plugged into the correct input.</li> <li>5. If using a mixing console, make sure fader and balance are set to center positions and levels are increased. Make sure the mixer is plugged into the correct input.</li> <li>6. If channel levels settings are maxed out, turn down the appropriate one, as you may be over driving the unit.</li> <li>7. Check volume and level settings on all input sources.</li> </ol>
Buzzing sound	<p>Make sure you are using a proper cable. For 1/4" cables, there are three types: instrument, TS (unbalanced), and TRS (balanced). Check the requirements of the connected gear and make sure you are using the appropriate cable.</p>
Mic feedback	<p>Point the mics away from the speaker. Make sure the mics are behind the speaker, not in front of it.</p>
Poor mic sound	<p>Make sure you are using the XLR part of the Mic/Line port</p>
Bluetooth/TWS pairing fails	<ol style="list-style-type: none"> <li>1. Check to see that both devices are turned on and that your Bluetooth device is discoverable.</li> <li>2. Turn both devices off and then on.</li> <li>3. Make sure the BT/AUX selector is set to BT.</li> <li>4. Make sure that the Bluetooth device is within 5 feet of the unit.</li> <li>5. Move both devices away from other Bluetooth devices, micro-waves, wireless routers, and other electronics.</li> <li>6. Make sure that the unit is not paired to a previously paired device or to another speaker.</li> </ol> <p><b>Please refer to page 4 for Bluetooth and TWS pairing procedures.</b></p>

## FEDERAL COMMUNICATIONS COMMISSION COMPLIANCE INFORMATION

Responsible party name: Rockville

Address: 600 Bayview Ave,  
Entrance A,  
Inwood, NY 11096

Hereby declares that the product(s) TITAN PORTABLE ARRAY complies with FCC rules as mentioned in the following paragraph:

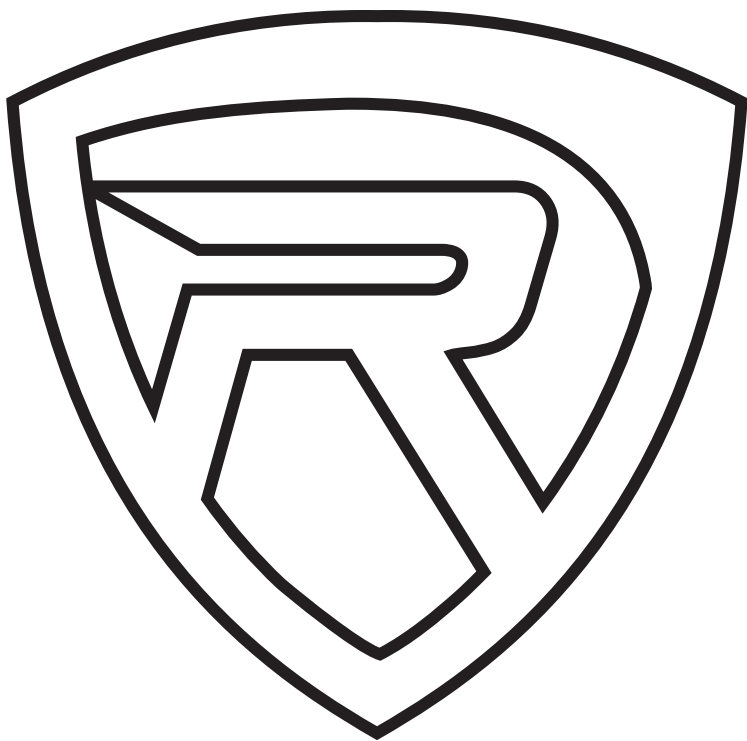
This device complies with Part 15 of the FCC rules. Operation is subject to the following two conditions: (1) this device may not cause harmful interference, and (2) this device must accept any interference received, including interference that may cause undesired operation.

Note: This equipment has been tested and found to comply with the limits for a Class B digital device, pursuant to Part 15 of the FCC rules. These limits are designed to provide reasonable protection against harmful interference in a residential installation. This equipment generates, uses, and can radiate radio frequency energy and, if not installed and used in accordance with the instructions, may cause harmful interference to radio communications. However, there is no guarantee that interference will not occur in a particular installation. If this equipment does cause harmful interference to radio or television reception, which can be determined by turning the equipment off and on, the user is encouraged to try to correct the interference by one or more of the following measures:

- Reorient or relocate the receiving antenna.
- Increase the separation between the equipment and receiver.
- Connect the equipment to an outlet on a circuit different from that to which the receiver is connected.
- Consult the dealer or an experienced radio/TV technician for help.

מרחב  
רלוויה  
Rock

# ***ROCKVILLE***



## **RockvilleAudio.com**

© 2025 ROCKVILLE // Features and specifications are subject to change and/or improvement without notice.