

# ROCKVILLE

## ROCK EVERYWHERE

WATERPROOF PORTABLE BLUETOOTH  
SPEAKER w/TWS STEREO LINKING

### OWNER'S MANUAL

#### ATTENTION:

**WATCH THIS VIDEO BEFORE FIRST USE!**

Scan the **QR code** or go to **rockvillesupport.com/rock-everywhere** for essential information, guides (video and/or written), and tips to make the most out of your purchase.

**If you prefer written instructions, please read ahead!**

*With Rockville you get many options.*



**Missing items?** If you ordered a bundle that includes more than one product and you are missing part of your bundle, then it just means your order shipped from two different warehouses. You will receive the remaining items very soon. If you have any concerns or inquiries, feel free to call our customer support center at 1-646-758-0144, 24 hours a day/7 days a week.

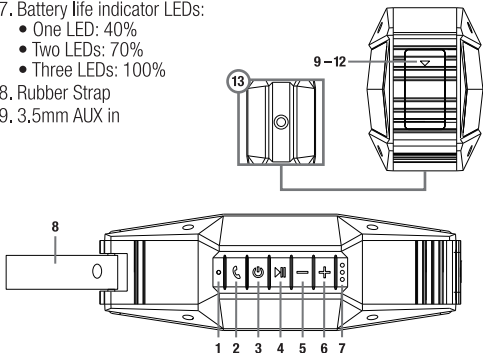
Thank you for purchasing the Rockville ROCK EVERYWHERE Water proof Bluetooth Speaker w/TWS. Please read this guide carefully for proper use of your ROCK EVERYWHERE speaker. Should you need assistance, please call our technical help line at 1-646-758-0144, 24 hours a day/7 days a week.

## **INCLUDES**

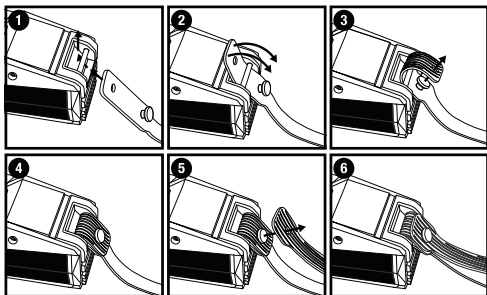
- Bluetooth speaker
- Micro USB charging cable
- 3.5mm to 3.5mm aux cable
- Bicycle handlebar mount
- Rubber strap
- Manual & Warranty card

# FUNCTIONS

1. Bluetooth indicator LED
  2. Answer/End call
  3. Power On/Off; Mode
  4. Play/Pause
  5. Volume -/Previous
  6. Volume +/Next
  7. Battery life indicator LEDs:
    - One LED: 40%
    - Two LEDs: 70%
    - Three LEDs: 100%
  8. Rubber Strap
  9. 3.5mm AUX in
  10. SD card slot
  11. 1 amp USB Power output
  12. Micro USB charging port
  13. Handlebar clamp attachment point
- Visit: <https://vimeo.com/375451811> for detailed installation instructions.



## Attaching the Strap:





## OPERATION

**Power ON/OFF; Switch Modes:** Press the Power button for 3 seconds to turn on. Press for 6 seconds to turn off. Shortpress to switch between modes (Bluetooth, SD, AUX).


### True Wireless Stereo Linking (TWS)

If you have a pair of ROCK EVERYWHERE speakers, you can set them up as a 2.0 stereo speaker system.

1. Power on both speakers.
2. Double click the Play/Pause button on either one of the units to enter stereo pairing mode. This will be the main unit. You will hear a tone and it will attempt to pair with the second unit. Upon successful pairing, the main unit's indicator LED will blink slowly.
3. Now look for and select ROCK EVERYWHERE on your device's list of available Bluetooth connections.
4. Upon successful pairing, you should be able to hear sound from both speakers.
5. To exit TWS mode, disconnect your Bluetooth device then press and hold the  button on the either one of the units.

**Please note:** If the unit is paired with a Bluetooth device, press and hold the  button to disconnect from the current device.

### Bluetooth

**Pairing:** Power ON the unit and it will automatically go into Bluetooth mode. The blue mode indicator LED will flash quickly. Look for and select ROCK EVERYWHERE on your device's list of available Bluetooth connections (please input "0000" if you are prompted for a PIN). Upon successful pairing, you will hear a tone and the indicator LED will blink slowly. If the unit does not pair within 8 minutes, it will automatically shut off. To unpair, press and hold the .

**Please note:** The unit will pair with a previously paired device.

**Music Playback:** Press the Play/Pause button to begin or pause music playback.

**Volume Control:** Press the + button to increase the volume or press the - button to decrease the volume.

**Skip Songs:** Long press the + button for the next song. Long press the - button for the previous song.

**Answering/Ending Calls:** Press the  button to answer incoming calls. Press again to end the conversation. Long press to reject an incoming call. Double click to call last number.

## **SD**

Insert an SD card into the corresponding port at the side of the unit. Playback will begin automatically. Supports cards up to 256Gb and the following formats: MP3, WMA, APE, FLAC, and WAV. It is possible to transfer music files from your computer to the inserted SD card via the unit's micro USB port. This function supports most PC and Apple computers.

**Music Playback:** Press the Play/Pause button to begin or pause music playback.

**Volume Control:** Press the + button to increase the volume or press the - button to decrease the volume.

**Skip Songs:** Long press the + button for the next song. Long press the - button for the previous song.

### **Transferring Files to an SD Card:**

1. Turn off the unit and insert an SD card.
2. Connect the micro USB cable to the unit and the other end to a computer. The unit will show up as an external device: USB DISK AA.
3. Double click the icon and drag files into the folder. Once the files have copied over, eject the device.

## **Auxillary**

Use the included 3.5mm to 3.5mm cable to connect your external audio device. The unit will automatically switch to line-in mode.

**Music Playback/Skip Songs:** Play/pause and skip track functions are unavailable in this mode. Use your device to control these functions.

**Volume Control:** Press the + button to increase the volume or press the - button to decrease the volume.

### **Charging/Power Bank**

Connect the included micro USB cable to the micro USB port at the rear of the unit. Connect the other to an AC adapter (not included) or any 5V/2A USB charging enabled device. The power indicator

LED will flash during charging. Full charge time is 4.5 hours, normal charge time is 1 hour. Playback is possible during charging. To charge a device, connect it to the 5V/1A USB power output port. The power LED will remain on while the Power Bank is in use.

## FEATURES

- Rockville ROCK EVERYWHERE waterproof portable Bluetooth speaker w/TWS stereo linking
- IPX6 waterproof and submersible in water for up to 20 seconds
- 30 watts peak power
- 15 watts continuous RMS
- 3600 mAH battery supports 47 hours of playback at 25% volume, 27 hours at 50%, and 5 hours at max volume.
- Battery charges with included micro USB cable
- 3 Battery life indicator LEDs
- Fast Charge time: 3 Hours
- TWS-True Wireless Stereo technology enables the first speaker to wirelessly pair to a second speaker to give you stereo sound.
- SD slot allows you to play music files (MP3/WMA/APE/FLAC/WAV) on a memory card (256Gb max).
- Transfer music files to an SD card from your PC or MAC via the micro USB port.
- Audiophile sound quality: Uses the best drivers and a passive radiator to give amazing frequency range and sound quality.
- Uses DSP tuning along with top of the line drivers to achieve a very balanced sound
- Actions 4.2 Bluetooth chipset streams a high fidelity signal and increases the battery's efficiency
- 40 foot max Bluetooth range
- Perfect for shower, bedroom, kitchen, bicycle, camping, hiking, pool, beach, on-the-go, and many other applications
- Includes bicycle handlebar mount
- Playback Controls - Play, Pause, Skip Forward, Skip Back, Volume Up, Volume Down
- Will control next song, pause, play on popular apps like Pandora, Spotify, and others

- The built-in mic allows you to make and receive phone calls hands-free
- Rugged and Shockproof with Rubberized impact-resistant silicone feet
- Compatible with any Bluetooth devices such as iPad, iPhone, Laptops, Android phone, other cell phones, iPods, other Bluetooth MP3 Players
- Distortion: Less than 1%
- Frequency Response: 80Hz – 20KHz
- Dimensions of Unit (inches): 7.2" x 3.23" x 2.32" inch
- Unit weight: 0.97 lbs

## TROUBLESHOOTING

No Power	<ul style="list-style-type: none"> <li>• Make sure the battery is fully charged.</li> <li>• If not, plug the unit to a USB power source and charge for 1 hour to achieve a full charge.</li> </ul>
Bluetooth pairing fails	<ul style="list-style-type: none"> <li>• Make sure both devices are turned on and that your BT device is discoverable.</li> <li>• Make sure you've selected the proper source.</li> <li>• Make sure the BT device is within 5ft of the unit.</li> <li>• Move both devices away from other BT devices, microwaves, wireless routers, and other electronics.</li> <li>• Make sure the unit is not paired to another device.</li> </ul>
TWS pairing fails	<ul style="list-style-type: none"> <li>• Make sure both units are turned on.</li> <li>• Make sure they are close to each other.</li> <li>• Move both units away from other BT devices, microwaves, wireless routers, and other electronics.</li> <li>• Make sure the units are not previously paired to your device, to another device, or to each other. Then follow the steps in the True Wireless Stereo Linking section.</li> </ul>
No SD playback	<ul style="list-style-type: none"> <li>• Make sure you're in the proper mode.</li> <li>• Check that the SD card is not damaged.</li> <li>• Make sure that the SD card's capacity is no more than 254GB.</li> <li>• Make sure files are in the appropriate format.</li> </ul>

## **FEDERAL COMMUNICATIONS COMMISSION COMPLIANCE INFORMATION**

Responsible party name: Rockville

Address: 600 Bayview Ave,  
Entrance A,  
Inwood, NY 11096

Hereby declares that the product Rockville ROCK EVERYWHERE portable Bluetooth speaker complies with FCC rules as mentioned in the following paragraph:

This device complies with Part 15 of the FCC rules. Operation is subject to the following two conditions: (1) this device may not cause harmful interference, and (2) this device must accept any interference received, including interference that may cause undesired operation.

Note: This equipment has been tested and found to comply with the limits for a Class B digital device, pursuant to Part 15 of the FCC rules. These limits are designed to provide reasonable protection against harmful interference in a residential installation. This equipment generates, uses and can radiate radio frequency energy and, if not installed and used in accordance with the instructions, may cause harmful interference to radio communications. However, there is no guarantee that interference will not occur in a particular installation. If this equipment does cause harmful interference to radio or television reception, which can be determined by turning the equipment off and on, the user is encouraged to try to correct the interference by one or more of the following measures:

- Reorient or relocate the receiving antenna.
- Increase the separation between the equipment and receiver.
- Connect the equipment into an outlet on a circuit different from that to which the receiver is connected
- Consult the dealer or an experienced radio/TV technician for help.





**RockvilleAudio.com**

© 2025 ROCKVILLE // Features and specifications are subject to change and or improvement without notice.