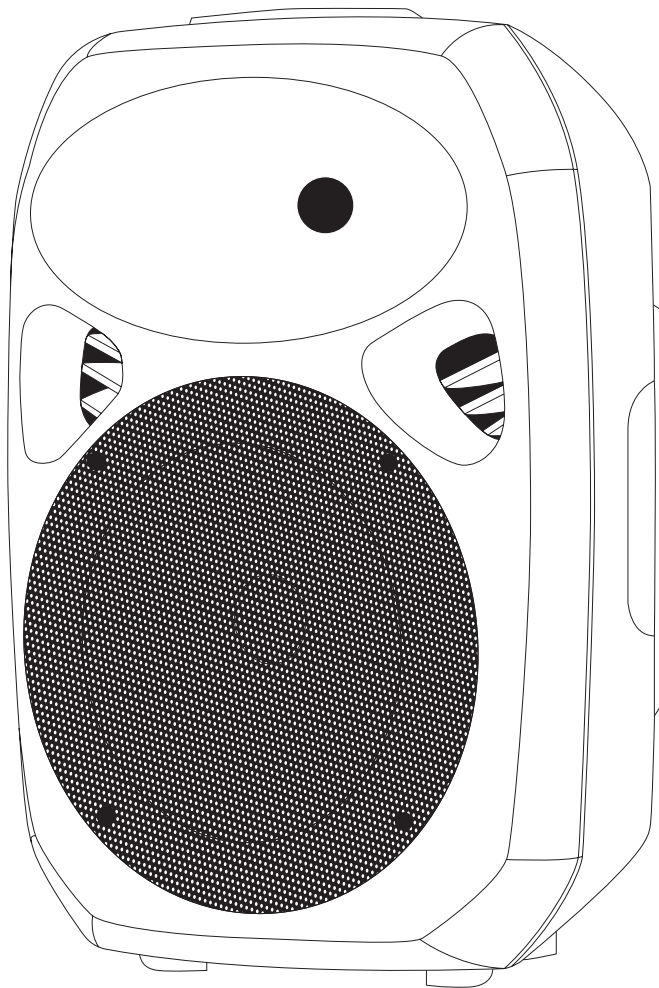


# ROCKVILLE



OWNER'S MANUAL

## RPG152K V2

15" ACTIVE DJ/PA SPEAKERS

*Who reads manuals?*

Instead, go to [vimeo.com/440117699](https://vimeo.com/440117699) or scan the QR code and watch a short video, which shows you how to set this item up and how to use it.



Rockwell

Thank you for purchasing this Rockville Power Gig RPG152K V2 Bluetooth pro audio speaker system.

Please read this owner's manual carefully for proper use of your Power Gig RPG152K V2 Bluetooth pro audio speaker. Should you need technical assistance, please call our technical help line at 1-646-758-0144, Monday through Friday, 9am to 5pm EST.

## IMPORTANT SAFETY INSTRUCTIONS

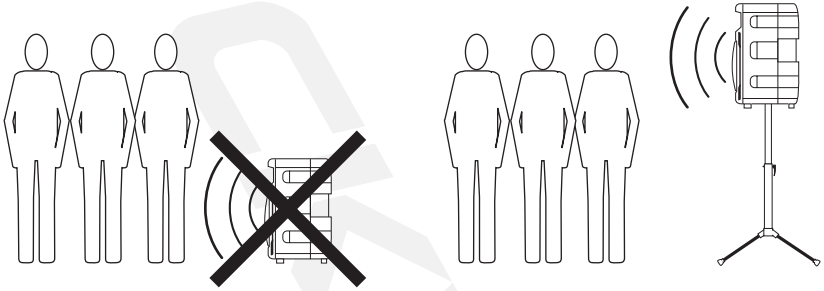


- To reduce risk of electric shock, never open the unit. There are no user serviceable parts. Refer service to an authorized Rockville service center.
- Do not expose this unit to any kind of moisture.
- Please ensure that the unit is situated in a properly ventilated area.
- Make sure the unit is placed on a level and stable surface.

# Setting Up Your Power Gig Professional Sound System

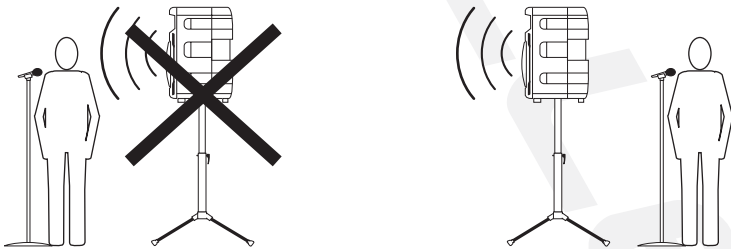
Your Power Gig is set up to produce the full spectrum of sound from its woofer and tweeter horn combination. The lower frequencies seek out the floor of the room that they are playing in and travel along the floor and walls. The tweeter horn is more directional. Hence when setting up your system its more important to make sure that the tweeter horns are not blocked by any furniture and are located/aimed at ear level to the listening audience. Woofer aiming is not as critical as explained previously due to the nature of the woofer sounds, allowing them to travel through various paths even when blocked.

It is therefore recommended that when setting up your system you set up your speakers on provided stands so that the tweeter sounds will radiate above the listening crowd. This will guarantee optimum sound dispersion and achieve clear vocal sound reproduction.



## How To Avoid Irritating Feedback

The placement of your microphone is critical in avoiding feedback through your Power Gig system. Never set up your microphone in front of the speaker. Always set up your microphone behind the speaker. When approaching the speaker to make any adjustments, we recommend approaching the speaker from the rear and not walking directly towards the front of the speaker.



# Assembling Your Power Gig Professional Sound System

## Stands

1. Remove the stands from their packaging.

2. Loosen up the adjustment knob (fig. a) and spread the legs to the desired width (fig. b). We recommend spreading the legs to the point that the support bars are parallel with the floor. Retighten the leg adjustment knob so that the legs are securely positioned (fig. c). Do not overtighten.

fig. a



fig. b



fig. c



3. Loosen the stand extension by loosening the locking knob (fig. d). Lift the extension to the desired height (fig. e). Now insert the safety detent pin (fig. f). Make sure the pin goes all the way through the extension pole (fig. g). If you retighten the locking knob, do not overtighten it.

fig. d



fig. e



fig. f



fig. g



## Mounting the Speaker

1. Unpack the speakers from their packaging.

2. Carefully lift the speaker above the stand, lining up the extension pole with the mounting hole at the bottom of the speaker (fig. h). This step may require a second person for assistance.

3. Once the speaker is mounted on the stand, secure it by tightening the locking knob located behind the pole opening at the bottom the speaker (fig. i).

fig. h



fig. i



## Connecting the Passive Speaker

To connect the passive speaker to the active unit, use the included  $\frac{1}{4}$ " to  $\frac{1}{4}$ " cable. Connect one end of the cable to the  $\frac{1}{4}$ " port on the active unit marked Speaker Out (fig. j). Now connect the other end to the  $\frac{1}{4}$ " port on the passive unit marked Speaker In (fig. k). Make sure that the power to the active unit is turned off before you connect the passive unit.

fig. j

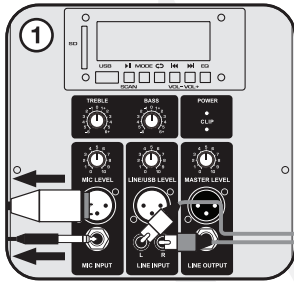


fig. k

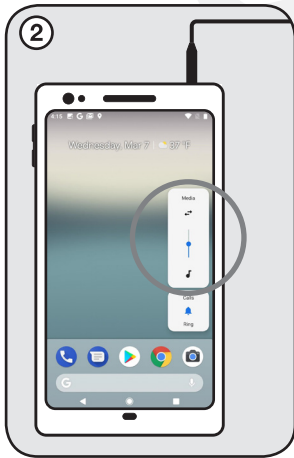


# Setting Level Controls

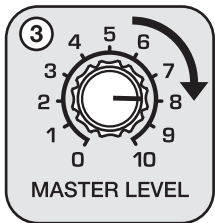
It is best practice to set your input level controls (gains) in this manner:



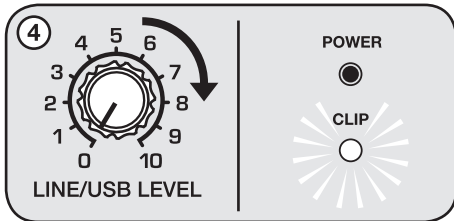
1. Unplug all inputs except for the one you wish to set the gain for. In this instance, the Line In RCA inputs.



2. Set the line level input device volume (smart phone, tablet, MP3 player, etc.) to 60%.



3. Set the RPG152Kv2 Master Level to 75%.



4. Slowly turn up the level on the selected input (in this case, the Line/USB level). As soon as the clip indicator LED goes on or you hear any distortion – turn it down one or two notches.

After you set the levels on all input devices, you can readjust the RPG152Kv2 levels as necessary.

## ! PLEASE NOTE

Because mixers feature two volume controls (channel and master), when connecting one via the XLR line in port, the procedure is slightly different. The RPG152Kv2 Master Level should be set to 50% and the Line/USB Level control should be set to 50%. Set the mixer master volume to 50% and make the adjustments in step 4 on the mixer channel level control. If after making these adjustments the signal still isn't strong enough, you can additionally boost the signal by turning up the Line/USB Level control.

When adjusting the Mic Level control, you must speak into the microphone and adjust the level control as needed. This is because adjustments to the mic input are a matter of mic volume in relation to the music volume and not necessarily a clipping issue.

## APPLICATION USES

### Microphone Presentations

Your Power Gig features ultra-low noise Mic input via an XLR port and 1/4" TRS stereo jack.

1. Make sure the Power switch is in the OFF position.
2. Plug your microphone into either the XLR port or 1/4" jack **(never use both at once)**.
3. Switch on the Power Gig unit.
4. Refer to the "Setting Level Controls" section of this manual for instructions on how to properly adjust the Mic Level controls.

Always stand behind the Power Gig when making your microphone adjustments to avoid feedback distortion.

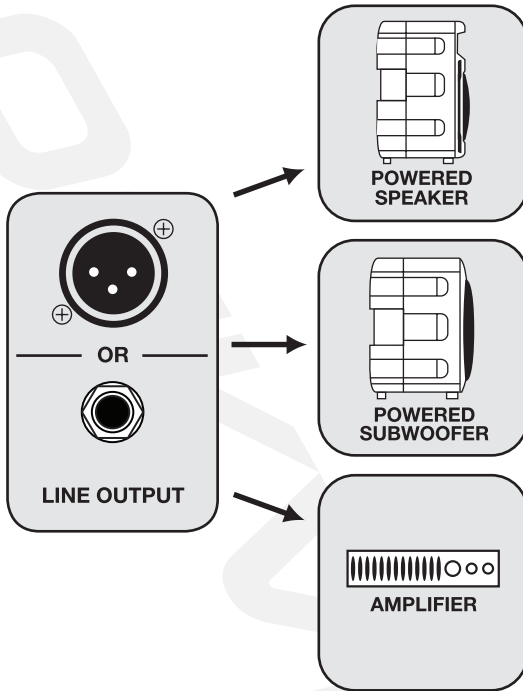
### Line Input

You can use the Line In XLR input to connect a mixer or the RCA inputs to connect an additional stereo signal source such as a smart phone, tablet, MP3 player, CD player, etc.

1. Make sure the Power switch is in the OFF position.
2. Connect the mixer to the XLR input or line level signal source to the RCA inputs **(never use both at once)**.
3. Switch on the Power Gig unit.
4. Make sure the MP3/Line Input button is set to the Line In position.
4. Refer to the "Setting Level Controls" section of this manual for instructions on how to properly adjust the line input level control (gains).

## Line Out Balanced Connection.

The XLR/1/4" Line Outputs allow you to output the amplifier signal to a powered subwoofer, another powered speaker, or an amp, which will, in turn, power other speakers. Simply connect the output device to the RPG152Kv2 using an XLR to XLR, XLR to 1/4" TRS, or a 1/4" to 1/4" cable to share the signal. We recommend you use high quality cables such as Rockville's RCXFM20E-B XLR to XLR cable, the RCXMB20-B XLR to 1/4" TRS cable, or the RCTR series 1/4" TRS to 1/4" TRS cables. Do not use both outputs at once.



## Speaker Output Connection.

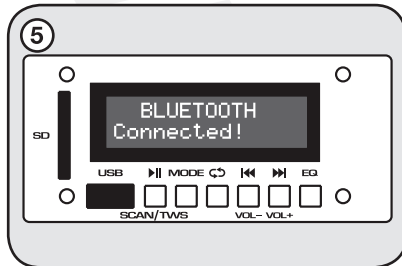
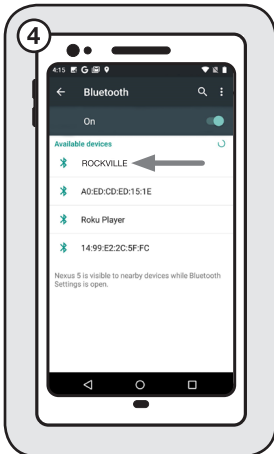
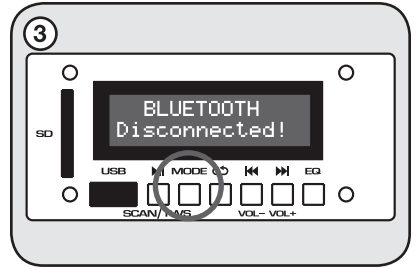
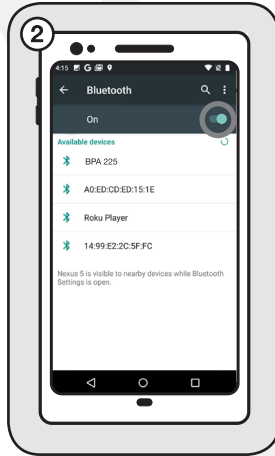
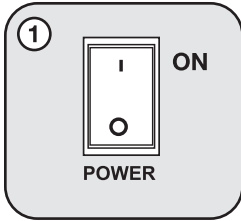
The 1/4" TRS output marked Speaker Out is used to connect the active unit to the passive unit. Passive speaker impedance must always be 8 ohms.



# Bluetooth Pairing

To connect your iPod, iPhone, MP3 player, Android phone, or any other Bluetooth capable device, follow the steps listed below.

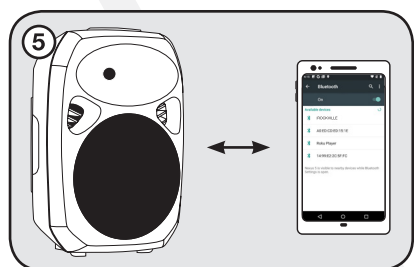
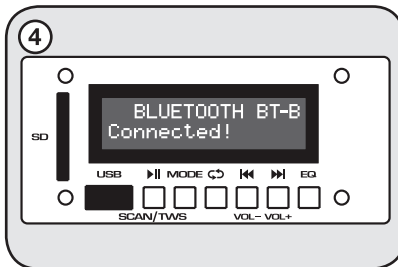
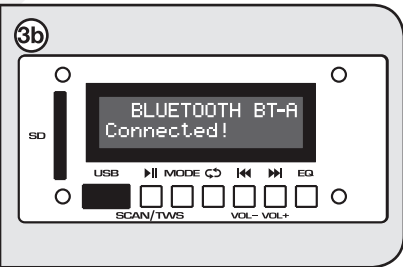
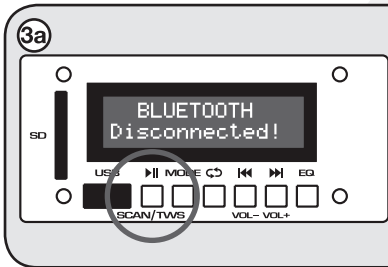
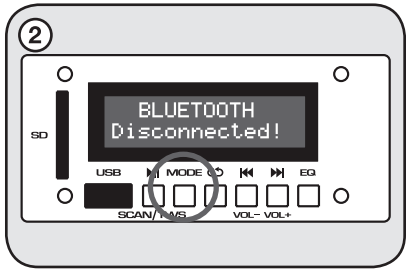
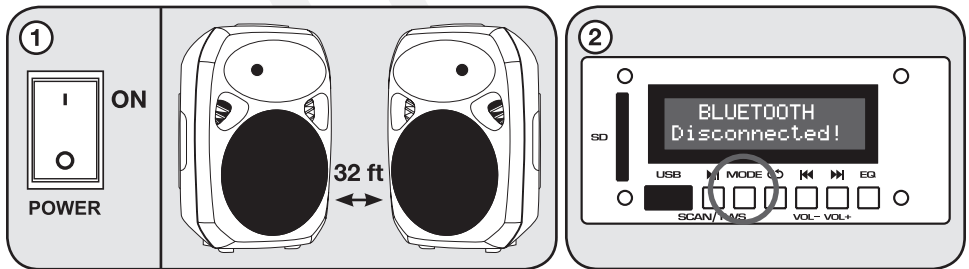
1. Make sure the RPG unit's power switch is in the ON position.
2. Turn on the Bluetooth feature on your device.
3. Push the Mode button on your RPG unit until you are in Bluetooth mode. The LCD screen will read "BLUETOOTH Disconnected"
4. Once in Bluetooth mode, the unit should show up on your device as "ROCKVILLE". Select it from your list of available devices.
5. If pairing is successful, the LCD screen will read "BLUETOOTH Connected". You can now begin to stream music.



## Wireless Speaker Linking

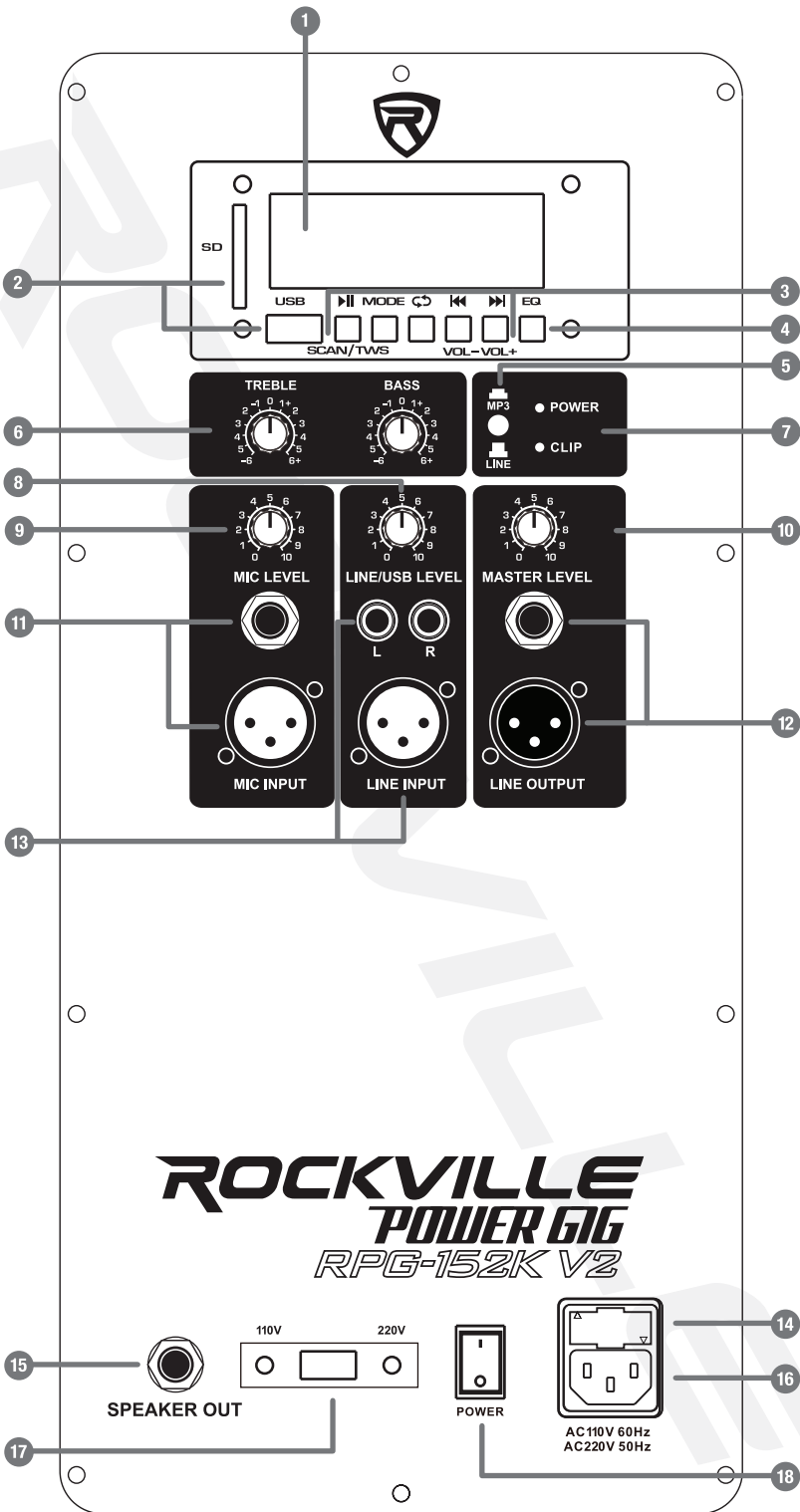
The RPG152K v2 features True Wireless Stereo (TWS) Bluetooth linking. This means you can purchase 2 of these speakers and link them together to play in stereo wirelessly.

1. Make sure both RPG unit's power switches are in the ON position and that they are within 32 feet of each other.
2. Press the Mode button on both of the units to enter Bluetooth mode. The LCD screens should show that the speakers are not connected via Bluetooth or to another speaker.
3. Press the SCAN/TWS button on one of the units for 3 seconds (3a). If pairing is successful the unit's LCD screen will read "BLUETOOTH BT-A Connected" (3b). This is the primary and all functions will be controlled by this unit.
4. The secondary unit's LCD screen will read "BLUETOOTH BT-B Connected".
5. Once the speakers are connected, go to your phone's Bluetooth interface and select "ROCKVILLE" from the list of devices. If connection is successful, you will hear the same audio from both unit's. You are now ready to enjoy true wireless stereo sound!



### ! PLEASE NOTE

Once the units are in TWS mode, the primary (left) unit becomes the master unit and will control all functions.



1. LCD display screen
2. USB and SD Card input
3. **MP3 Player controls:**
  - a. **◀◀(VOL-)/▶▶(VOL+)** - In USB/SD/Bluetooth mode press these buttons to skip tracks. In FM mode press these buttons to skip stored stations. In any mode, press and hold to adjust MP3 module volume.
  - b. **Play/Pause, Scan, TWS** - Press this button once to start music playback; press again to pause. In FM radio mode press and hold for 5 seconds to automatically scan and save all available stations. See page 11 for TWS pairing procedure.
  - c. **Repeat** - Press to repeat current track. Press again to repeat all tracks. Press once again to exit repeat mode.
  - d. **Mode** - Switch between modes (FM Radio, Bluetooth, USB, and SD).
4. EQ button allows you to toggle between the 5 Presets.
5. MP3/Line Input selector button
6. 2 band equalization control panel.
  - Bass adjusts the low frequencies to  $\pm 6\text{dB}$ .
  - Treble adjusts high frequencies to  $\pm 6\text{dB}$
7. Power LED indicator and amplifier clip limit LED indicator
8. Line/USB Level control
9. Mic Level control
10. Master volume
11. The Mic input panel accepts XLR type connectors and balanced and unbalanced  $\frac{1}{4}$ " TRS plugs. When you use an unbalanced  $\frac{1}{4}$ " TS plug, the line input automatically turns the ring into ground
12. XLR/ $\frac{1}{4}$ " Line output
13. The XLR Line Input port accepts signals from a variety of sources such as keyboards, electronic drums, mixers, etc. Use the RCA plugs to connect stereo signal sources such as CD players, DVD music players, MP3 players, etc.
14. User serviceable fuse (see page 14 for replacement procedure).
15. Output to passive speaker
16. IEC AC power socket
17. Voltage selector switch
18. Power switch

## Features

- 1500 Watts Peak/375 Watts RMS/750 Watts Program Power
- Mic Input XLR + 1/4"
- Mic Level
- Line Input XLR + RCA
- Line Level
- Line Output XLR + 1/4"
- Master Volume
- 2 Band EQ: Bass and Treble
- MP3/Line Input selector button
- Power LED
- Clip LED
- USB/SD Input. Acceptable file formats: MP3, WAV, WMA
- FM Radio Built In
- 5-Mode Preset EQ
- Bluetooth Connectivity
- True Wireless Stereo (TWS) linking
- Wireless Remote Control
- LCD Display Screen for MP3 Player Functionality
- Output to Second Passive Unit with Included Cable
- Includes One Wired Microphone
- Includes 1 Pair of Speaker Stands
- 110/220 Volt Switchable
- Fuse: T5AL 250V
- 375 Watts RMS/750 Watts Program Power/1500 Watts Peak
- High Power 15" Long-throw Woofer
- 25mm Piezo Compression Horn Tweeter
- Frequency Response: 45Hz – 20KHz
- Maximum SPL @ 1w/1m: 125dB
- Impedance: 8 Ohm

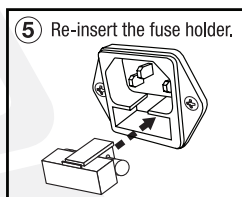
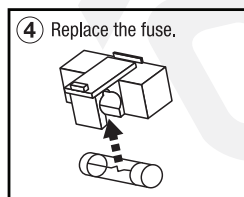
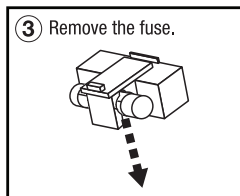
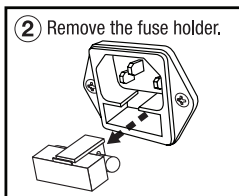
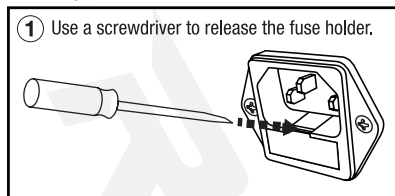
## Troubleshooting

PROBLEM	SOLUTION
No power	<ol style="list-style-type: none"><li>1. Make sure the unit is plugged in and the power switch is in the ON position.</li><li>2. Check that the power cable is plugged in tightly to the unit.</li><li>3. Check and replace the fuse if necessary. See fuse replacement diagram on page 14.</li><li>4. If people or equipment tend to step on and roll over or stretch your power cable it can get damaged. Always try a second cable to test for shorts in original cable. Dispose of original damaged power cables immediately.</li></ol>

PROBLEM	SOLUTION
No sound/ distorted sound	<ol style="list-style-type: none"> <li>1. Check that all appropriate cables are plugged in correctly.</li> <li>2. Check the Volume settings (see page 6).</li> <li>3. Be sure Volume and Gain of appropriate channels are set above the 0 level and matched correctly (see page 6 and 7).</li> <li>4. Be sure your microphone is on.</li> <li>5. If using a mixing console, make sure fader and balance are set to center positions and levels are increased.</li> <li>6. Check the MP3/Line button to ensure the proper source is selected.</li> <li>7. If volume and Treble/Bass settings are maxed out, turn one of them down as you may be overdriving the unit.</li> </ol>
Buzzing sound	<p>Make sure you are using a proper cable. For ¼" cables, there are 3 types: instrument, TS (unbalanced), and TRS (balanced). Check the requirements of the connected gear and the input of the speaker and make sure you are using the appropriate cable.</p>
Mic feedback	<p>Point the mics away from the speaker. Make sure the mics are behind the speaker, not in front of it (see page 7) .</p>
Poor Mic sound	<ol style="list-style-type: none"> <li>1. Make sure you are using the Mic In port.</li> <li>2. If using wireless mics, connect them into the Line input of your mixer.</li> </ol>
Not enough bass	<p>Add a subwoofer to your setup – PA speakers do not play deep frequencies as well as a subwoofer. Regardless of brand or model, if you want deep thumping bass you must add a subwoofer.</p>
Bluetooth pairing fails	<ol style="list-style-type: none"> <li>1. Check to see that both devices are turned on and that your Bluetooth device is discoverable.</li> <li>2. Turn both devices off and then on again.</li> <li>3. Make sure you've selected the proper source.</li> <li>4. Make sure that the Bluetooth device is within 5 feet of the unit.</li> <li>5. Move both devices away from other Bluetooth devices, microwaves, wireless routers, and other electronics.</li> <li>6. Make sure that the unit is not paired to a previously paired device.</li> </ol>
TWS pairing fails	<ol style="list-style-type: none"> <li>1. Check to see that both devices are turned on.</li> <li>2. Make sure both devices are in Bluetooth mode.</li> <li>3. Make sure both RPG units are near each other.</li> <li>4. Make sure that the unit is not paired to a previously paired device.</li> <li>5. If TWS pairing is successful, but Bluetooth pairing to the main unit fails, please look at the "Bluetooth pairing fails" section above.</li> </ol>
No SD or USB playback	<ol style="list-style-type: none"> <li>1. Make sure you are in USB/SD mode.</li> <li>2. Make sure the SD card or USB drive is properly connected.</li> <li>3. Make sure the MP3/Line Input selector button is set to MP3.</li> <li>4. Make sure that the audio files are in the specified format (see page 14).</li> <li>5. Make sure the SD card/USB drive is not damaged.</li> </ol>

# Fuse replacement Diagram

Fuse type: T5AL 250V



## FEDERAL COMMUNICATIONS COMMISSION COMPLIANCE INFORMATION

Responsible party name: Rockville

Address: 600 Bayview Ave,  
Entrance A,  
Inwood, NY 11096

Hereby declares that the product(s) Power Gig RPG152K V2 pro audio speaker system complies with FCC rules as mentioned in the following paragraph:

This device complies with Part 15 of the FCC rules. Operation is subject to the following two conditions: (1) this device may not cause harmful interference, and (2) this device must accept any interference received, including interference that may cause undesired operation.

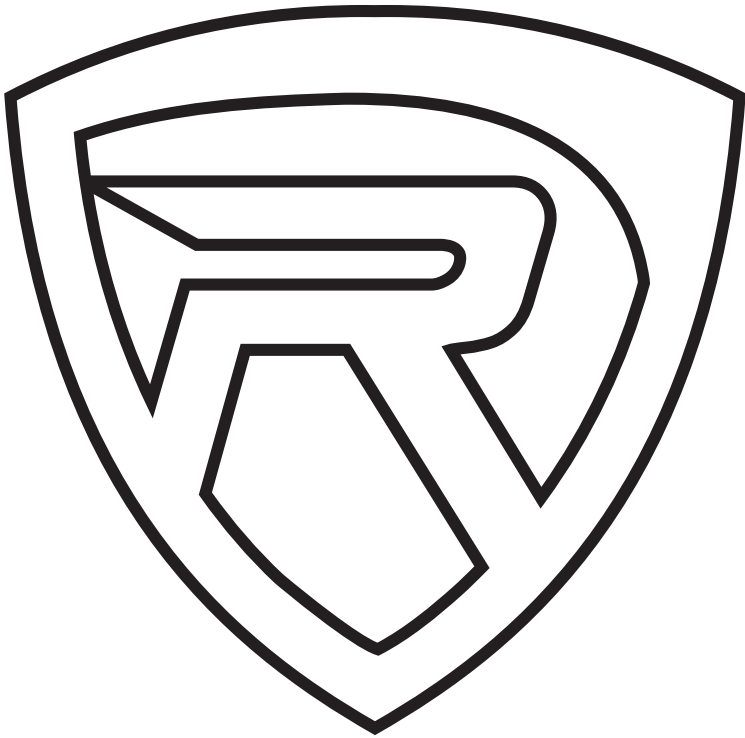
Note: This equipment has been tested and found to comply with the limits for a Class B digital device, pursuant to Part 15 of the FCC rules. These limits are designed to provide reasonable protection against harmful interference in a residential installation. This equipment generates, uses, and can radiate radio frequency energy and, if not installed and used in accordance with the instructions, may cause harmful interference to radio communications. However, there is no guarantee that interference will not occur in a particular installation. If this equipment does cause harmful interference to radio or television reception, which can be determined by turning the equipment off and on, the user is encouraged to try to correct the interference by one or more of the following measures:

- Reorient or relocate the receiving antenna.
- Increase the separation between the equipment and receiver.
- Connect the equipment to an outlet on a circuit different from that to which the receiver is connected.
- Consult the dealer or an experienced radio/TV technician for help.

Rockwell

ROCKWELL

***ROCKVILLE***



**RockvilleAudio.com**

© 2019 ROCKVILLE // Features and specifications are subject to change and or improvement without notice.