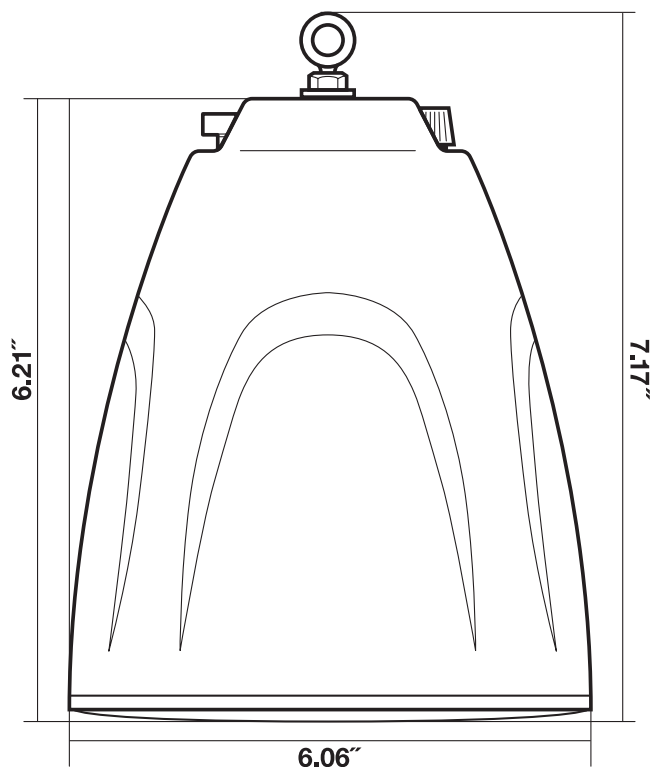


## Dimensions



## Features/Specifications

- 4" woofer with polypropylene cone and foam surround delivers clear mids and lows
- 8 Oz magnet
- ABS injection molded professional cabinet
- 13mm PEI dome tweeter for crystal clear highs
- 70V, 100V or 8-ohm operation
- 70V taps: 2.5W, 5W, 10W, 20W  
100V: 5W, 10W, 20W
- 8-ohm RMS power handling: 30W
- Frequency response: 70Hz – 20khz
- Sensitivity: 85dB  $\pm$ 2dB
- Eyelet hanging bracket is included
- Detachable euro block speaker terminals for easy installation
- Color: black or white
- Weight: 3.5lbs. each
- Cabinet dimensions: 6.06" (diameter) x 6.21" (height w/out eye hook)/7.17" (height w/eye hook)

**RockvilleAudio.com**

© 2025 ROCKVILLE // Features and specifications are subject to change and/or improvement without notice.

# ROCKVILLE

## PEN-40T

4" 70V HANGING PENDANT SPEAKER  
for COMMERCIAL/RESTAURANT USE

## OWNER'S MANUAL

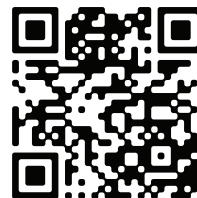
**ATTENTION:**  
**WATCH THIS VIDEO BEFORE FIRST USE!**

### *Who reads manuals?*

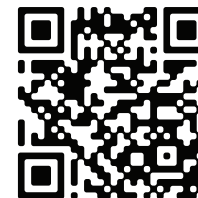
Scan the **QR codes** or go to the **URLs** below to access how-to video(s), the owner's manual, and other important information you may need to get the most out of your item.

**If you prefer written instructions, please read ahead!**

*With Rockville you get many options.*



[rockvillesupport.com/pen-40t-white](https://rockvillesupport.com/pen-40t-white)



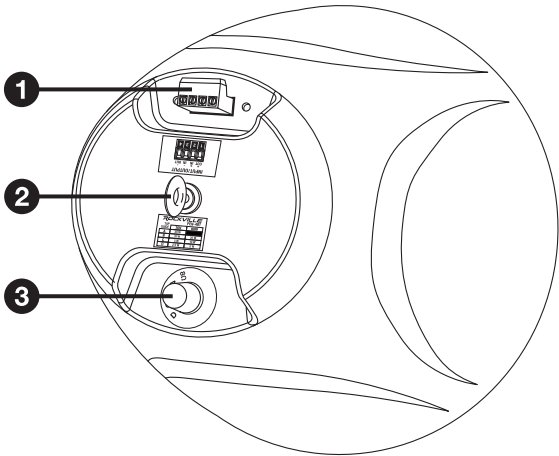
[rockvillesupport.com/pen-40t-black](https://rockvillesupport.com/pen-40t-black)

**Missing items?** If you ordered a bundle that includes more than one product and you are missing part of your bundle, then it just means your order shipped from two different warehouses. You will receive the remaining items very soon. If you have any concerns or inquiries, feel free to call our customer support center at 1-646-758-0144, 24 hours a day/7 days a week.

The Rockville PEN-40T series are beautiful hanging pendant speakers which would be perfect for restaurant, hotel, and other applications. Please read this guide carefully for proper use of your PEN-40T. Should you need assistance, please call our technical help line at 1-646-758-0144, 24 hours a day/7 days a week.

## Functions

- 1. Euro block terminal
- 2. Eye-bolt
- 3. 70V/100V/8-ohm tap switch



## Choosing the Appropriate Tap

70-volt systems are the number one choice for any application for which you want to install multiple speakers. With 70 volt there are a lot of advantages over 8-ohm systems. One of the main advantages is the simplicity of the wiring, as well as how easy it is to match up the speakers with an amplifier. You always want your 70-volt amp to have at least 15% or 20% more power than the combined watts your speakers are tapped at. For example, if you have a 200-watt /70-volt amplifier, you can install eight 70-volt speakers that are tapped at 20 watts each or sixteen 70-volt speakers that are tapped at 10 watts each as long as they total close to 160 to 175 watts. When we say the word “tap”, what we are referring to is the selector knob on the back of the PEN-40T. It allows you to set how many watts the built-in transformer will allow the speaker to get from the amplifier. There are taps set at 2.5, 5, 10, and 20 watts for 70-volt input; 5, 10, and 20 watts for 100-volt input. This range of taps allows for full customization of the sound for the space where the speakers are installed. In a restaurant, for example, you can tap your dining room speakers at 10 watts, the speakers in the outside seating area at 20 watts, and the ones in the hallway and bathrooms at 5 watts. Another great feature of 70-volt speakers is that you can mix and match any type, whether they are pendant speakers (such as these), wall-mount speakers, ceiling speakers, subwoofers, etc.

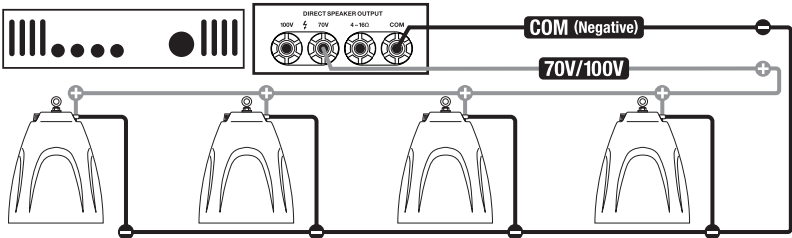
Another benefit of 70-volt speaker setups is the ability to run very long lines of speaker wire without signal loss. And, the wiring is very simple. You just connect all the positive terminals of the speakers to the positive 70-volt terminal(s) of the amplifier. The negative terminals on the speaker get connected to the negative (COM) terminal(s) of the amp. You do not have to worry about impedance as the power is constant.

## Setup

### 70V/100V Speaker Configuration

The total number of speakers multiplied by the tap value cannot exceed the output power (in watts) of your 70V amplifier. The example below shows a total of four PEN-40T speakers. Using the 20W taps, you will need an amplifier with at least 100 watts (4 speakers x 20W tap = 80W). A good rule of thumb is to select an amplifier with 15% to 20% greater power; in this case, an amplifier that delivers about 100W.

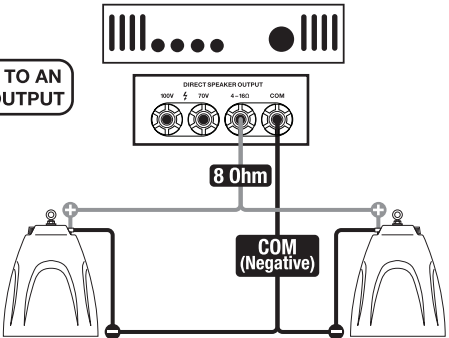
### FOUR PEN-40T SPEAKERS CONNECTED IN PARALLEL USING 20W TAPS



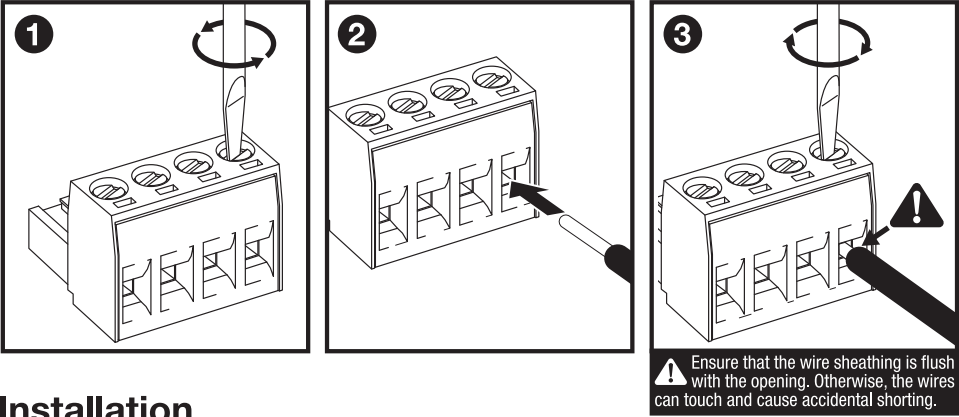
## Setup (continued)

### 8-Ohm Speaker Configuration

### 2 SPEAKERS CONNECTED TO AN AMPLIFIER WITH 8-OHM OUTPUT



## Wiring



## Installation

These speakers are designed to be hung over-head via a drop cable (not included). Make sure that the drop cable has been cut to the proper length and that it has been properly secured to the mounting surface.

- Slide the end of the drop cable through the eye-bolt's opening to create a loop.
- Close the loop by tying a knot (fig. a) or by using a fastener to secure it (fig. b, c, and d). **Please note:** The illustration displays the most common technique and some of the most common fasteners used for securing the cable. There are a wide variety of fasteners and techniques to secure the cable. Be sure to choose the one best suited for your installation.

