

# ROCKVILLE

## GB1

PORTABLE POWERED PA SYSTEM  
w/MIXER, SPEAKERS, STANDS, and MIC

## OWNER'S MANUAL

**ATTENTION:**  
**WATCH THIS VIDEO BEFORE FIRST USE!**

### *Who reads manuals?*

Scan the **QR code** or go to [rockvillesupport.com/gb1](http://rockvillesupport.com/gb1) to access how-to video(s), the owner's manual, and other important information you may need to get the most out of your item.

**If you prefer written instructions, please read ahead!**

*With Rockville you get many options.*



**Missing items?** If you ordered a bundle that includes more than one product and you are missing part of your bundle then it just means your order shipped from two different warehouses. You will receive the remaining items very soon. If you have any concerns or inquiries, feel free to call our customer support center at 1-646-758-0144, 24 hours a day/7 days a week.

# **ROCKVILLE**

Thank you for purchasing this Rockville GB1 Portable PA System. Please read this owner's manual carefully. Should you need assistance, please call our technical help line at 1-646-758-0144, 24 hours a day/7 days a week.



# TABLE OF CONTENTS

<b>SETUP GUIDE</b> .....	<b>2</b>
Mixer and Speakers	
<b>CONNECTIONS</b> .....	<b>3</b>
Microphones and Line Inputs	
Media Playback Sources	
Power	
<b>GENERAL USE TIPS</b> .....	<b>4</b>
Packing the Rockville GB1	
Microphone Usage	
Avoiding Irritating Feedback	
<b>BASIC OPERATION</b> .....	<b>5</b>
Setting Controls and Turning Unit On	
Adjusting Gain and Volume Controls	
Adjusting Tone Controls	
<b>BLUETOOTH AND MEDIA</b> .....	<b>6</b>
Bluetooth Operation	
Bluetooth Active LED	
Supported Audio File Types	
Media Source Playback	
<b>EQUALIZATION AND EFFECTS</b> .....	<b>7</b>
Graphic Equalizer	
Effects Usage	
<b>TROUBLESHOOTING</b> .....	<b>8</b>
<b>PANEL DESCRIPTIONS</b> .....	<b>9</b>
<b>FEATURES and SPEICIFICATIONS</b> .....	<b>11</b>

# SETUP GUIDE

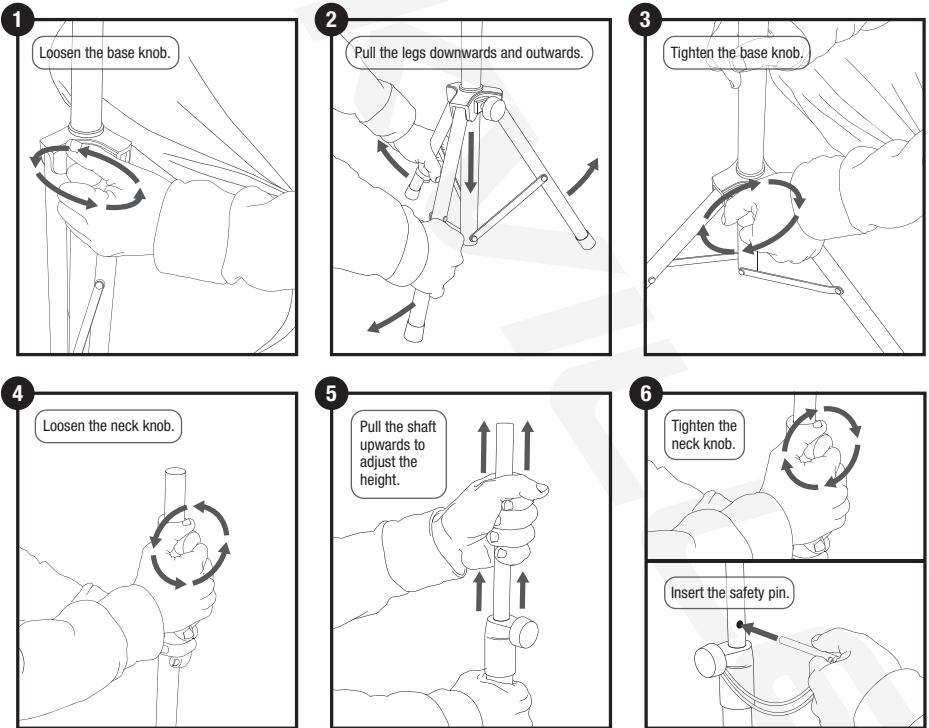
## SAFETY FIRST

Much of the setup of the Rockville GB1 is similar to the setup of other sound systems, and many aspects require plain common sense. Safety should always be your first concern. Always use grounded outlets and three-wire extension cords. Run sound system cables in a way to prevent the danger of tripping and tape them down if needed. Place the speaker stands and mixer on a solid, level surface. Following these guidelines will help prevent personal injury and equipment damage, ensuring years of trouble-free use.

## Mixer and Speakers

Place closed unit so speakers are upward. Release latches by lifting up until the latch disengages. Remove the speakers from the case.

Note: The latches can be closed after speakers are removed. This is recommended to avoid interference with removal of other components. This will also help avoid damage to the latches. Close the latch by pushing in until it is flush with the side of the case, then push down until it locks. Now, remove the speaker stands from the case and follow the directions below to set them up. Make sure the legs are fully extended and that they are positioned on a level surface. This will provide a stable base for the speakers.



Remove the speaker stands from the case. Place speakers on stands and position them so

# CONNECTIONS

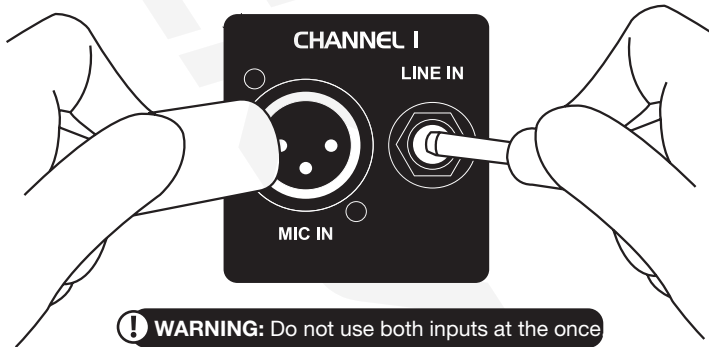
Only connect the included speakers to the mixer. The Rockville GB1's speakers provide optimal load for the powered mixer and using other speakers may result in equipment damage.

## WARNING!

that they will face toward the audience and away from the microphones. Connect speaker cables from the jack on the lower front of the speaker to the speaker outputs on the back of the mixer. Connect the left speaker to the LEFT OUTPUT and the right speaker to the RIGHT OUTPUT.

## Microphones and Line Inputs

The GB1's powered mixer is designed to work with any good-quality, balanced, dynamic or condenser microphone. Connect the included microphone to the XLR (three-pin) input connector as shown. If using multiple microphones, connect them in the order they will be on stage for easy adjustment to each microphone. To connect a line level device such as a keyboard, use a 1/4" instrument cable and insert into the 1/4" input as shown.



**XLR MICROPHONE INPUT**

**1/4" LINE LEVEL INPUT**

## Media Playback Sources

The GB1 powered mixer will accept various media playback devices. For connecting CD player or grounded record player use the CHANNEL 7 RCA Left and Right connections. For connecting an MP3 player or smartphone with media playback use a 3.5mm to RCA cable. When using a USB memory stick or SD card with MP3 or other audio files stored on it, insert it into the USB port or SD slot. Use the screen and controls in the master section to navigate and play back audio files.

## Power

Connect the power cord to the receptacle on the back panel of the unit, and then to a suitable electrical outlet. If an extension cord is required, make sure it is a three-wire cord with an intact ground pin to preserve the safety ground.

# GENERAL USE TIPS

## Packing the Rockville GB1

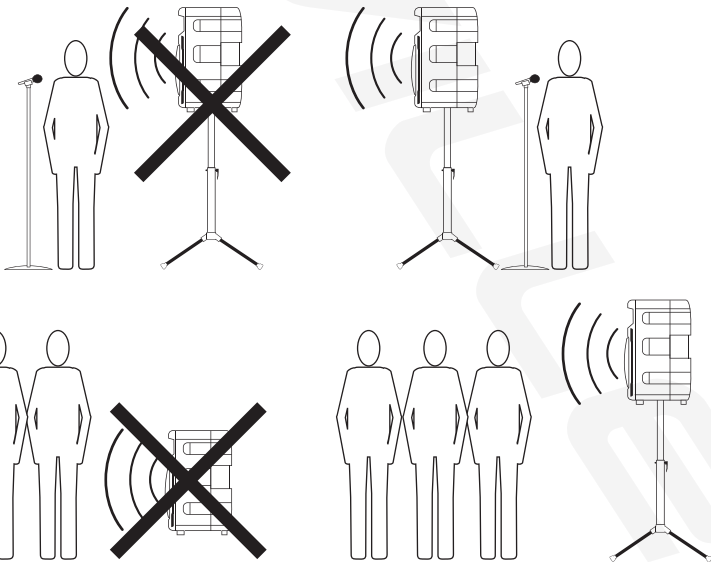
One of the GB1's many features is that the entire sound system can be packed inside its easily transportable case. Begin by folding the speaker stands, then secure them into their storage compartment using the two straps. Place the optional microphone(s) in their storage compartment, putting the cables in the other compartment or with the speaker stands. Lay the speakers face down on top of the bottom tray and secure the four latches. The GB1 is now ready to be carried or pulled on its built-in, luggage-style wheels.

## Microphone Usage

When practical, a single microphone is preferred. Additional microphones pick up more sound from the speakers and each mic must then be turned down to prevent feedback. However, if you have difficulty balancing the level of different individuals with one mic or if you still cannot get sufficient gain, using more mics can offer an advantage. For example, giving several singers their own microphone allows placement of the microphones much closer to each singer. This increases the volume of the sound at the mic and far outweighs any detrimental effect from using multiple mics. It also allows the volume of each mic to be adjusted separately for proper balance.

## Avoiding Irritating Feedback

The placement of your microphone is critical in avoiding feedback through your GB1. Never set up your microphone in front of the speaker. Always set up your microphone behind the speaker. When approaching the speaker to make any adjustments, we recommend approaching the speaker from the rear and not walking directly towards the front of the speaker.



# BASIC OPERATION

## Setting Controls and Turning Unit On

Before turning on power, make sure all speakers, microphones, and other input devices are connected. Set all controls to the 12 o'clock position and all other controls all the way down. Turn power on by placing the ON/OFF switch located on the back of the mixer in the ON position.

## Adjusting Gain and Volume Controls

The optimal setting for the powered mixer and included speakers is the MASTER VOLUME control. Adjust the CHANNEL GAIN control until the desired volume is achieved. If the desired volume is reached with the CHANNEL GAIN turned down to one of the first three positions, turn the MASTER VOLUME down so you can turn the CHANNEL GAIN up. If the desired volume is achieved when the CHANNEL GAIN is close to max then raise the MASTER VOLUME so you can lower the CHANNEL GAIN. These are the same as any basic mixer functions.

## Adjusting Tone Controls

For each active channel adjust the HIGH and LOW controls to achieve desired sound. Use moderation when making these adjustments, as extreme high settings of any of these controls can lead to a distortion of the sound and an increased chance of feedback on microphone inputs.

### HIGH

This High EQ shelving type of active tone control varies the treble frequencies (+/- 15dB at 12kHz) and is designed to remove noise or add brilliance to the signal, depending on the quality of the source.

### LOW

A shelving type of EQ that varies the bass frequency levels (+/- 15dB at 80Hz). Low EQ adds depth to thin-sounding signals or cleans up the muddy ones. As with any EQ, use sparingly. Too much of this EQ can give you a booming bottom end.

## Adjusting Reverb Control

Each channel features an independent REVERB control. Use this control to adjust the effect level of the corresponding channel.

# BLUETOOTH AND MEDIA

## Bluetooth Operation

To listen to the music via the Bluetooth wireless connection, you must first pair (link) your GB1 with your Bluetooth phone and/or music device. Turn off any Bluetooth devices previously paired with the GB1. Turn on the Bluetooth feature on your phone or music device. Make sure the GB1 is ready for a Bluetooth connection. The Bluetooth/USB mode must be active. The Bluetooth Active LED should be flashing. The LCD will say, "Bluetooth input". Place your phone or music device in Bluetooth search mode. The phone or music device will begin searching for the GB1. Select the unit from the search results on your phone or music device. Select Ok or Yes to pair with your phone or music device.

## Bluetooth Active LED

The blue Bluetooth Active LED indicates the status of the Bluetooth connection. If the LED is off, the Bluetooth module is powered off. If the LED is flashing, the GB1 is not paired with any device, but is available for connection. If the LED is lit continuously, that means a Bluetooth enabled device is paired.

## Supported Audio File Types

**.WAV**  
**.MP3**  
**.WMA**

## Media Source Playback

Hook up your media source device as mentioned previously. When using RCA jacks for a CD player, record player, or tape machine make sure the button is in the raised position so these jacks are active. Which inputs are active will also be displayed on the screen in the master section. Use the controls on the source device for play, stop, forward and reverse functions. Adjust channel 7 controls on the GB1 mixer for desired sound. For media playback using an MP3 player, smartphone, or other similar device make sure the button stays in the raised position. Connect using a stereo 3.5mm cable mentioned previously and use the source device for playback controls. When a device is connected to the 3.5mm jack the RCA jacks are automatically disabled. For MP3 or audio file playback from a USB memory stick, make sure the button is in the down position so the USB plug is active.

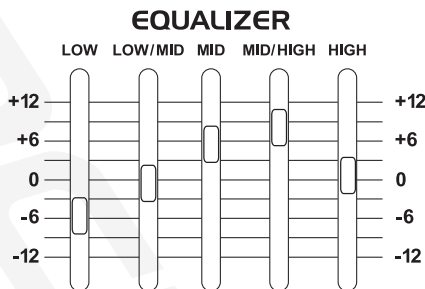
Note: The GB1 does not allow playback through multiple media inputs simultaneously.

With your USB device attached, use the MEDIA SELECT knob to navigate through your audio files. Once the desired file is displayed on the screen press the MEDIA SELECT knob to cue that file. Use the controls on the mixer for play, pause, forward and reverse. If you do not choose to navigate or select a certain file the GB1 will play the files in the order they are stored on your USB memory device. Non-audio files will show up in your navigation but will have no audio playback if selected. Only audio files can be selected for playback.

# EQUALIZATION AND EFFECTS

## Graphic Equalizer

Unlike the HIGH, MID, and LOW controls on each channel that adjust only the one of their own input signals, the seven-band graphic equalizer adjusts the tonal balance of all the signals going through the powered mixer. This graphic equalizer is also a powerful tool to help reduce or eliminate acoustic feedback. This offers the user great flexibility in adjusting the sound, but use moderation in making these adjustments.



## Effects Usage

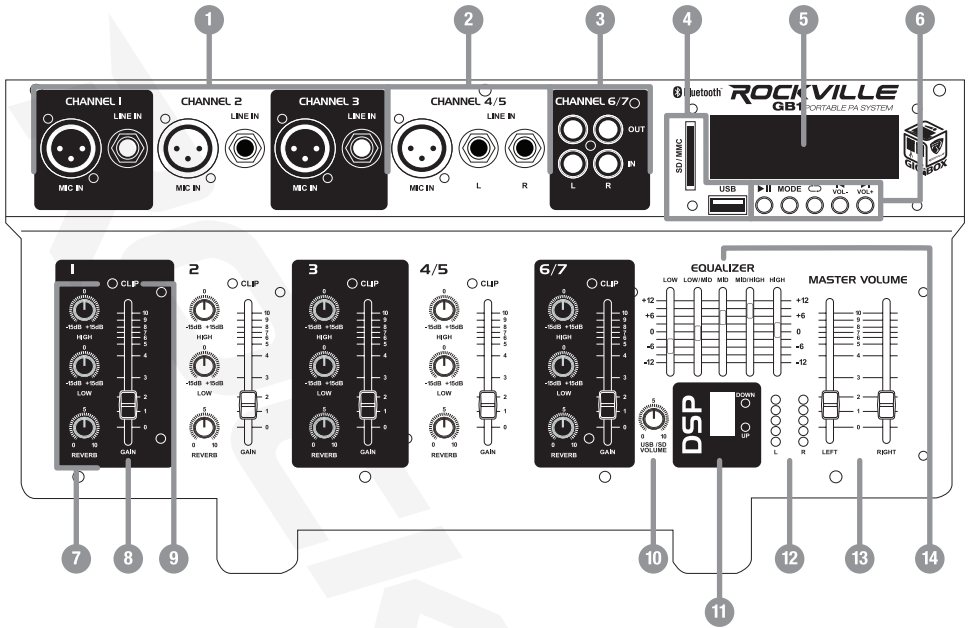
This unit has 16 built-in digital effects. Press the DOWN or UP button to activate the unit effects on a given channel. Choose one of the 16 presets whose parameters vary for both echo and delay effects. Cycle back to the no effect setting to remove effects from the audio.

#	EFFECT	PARAMETER
0	Reverb Hall	3.0sec
1	Reverb Hall	5.0sec
2	Reverb Room	1.0sec
3	Reverb Room	2.0sec
4	Reverb Plate	1.0sec
5	Reverb Plate	2.0sec
6	Echo 43% F.B.	100ms
7	Echo 43% F.B.	200ms
8	Echo 43% F.B.	300ms
9	Echo 58% F.B.	100ms
A	Echo 58% F.B.	200ms
B	Echo 58% F.B.	300ms
C	Chorus & Reverb	0.6Hz/ 2.0sec
D	Flanger & Reverb	0.6Hz/ 2.0sec
E	Chorus	0.6Hz
F	Flanger	0.6Hz

# TROUBLESHOOTING

<b>PROBLEM</b>	<b>CHECK</b>	<b>CORRECTION</b>
<b>No sound (LCD not lit)</b>	<b>Is power switch on? Is line cord connected to live power outlet?</b>	Turn power switch on. Connect power cord to live outlet
<b>No sound (LCD not lit)</b>	<b>Are MASTER and CHANNEL GAIN controls up?</b>	Adjust both MASTER and CHANNEL LEVEL controls upward to desired level. Check speaker connections. Turn mic switch on. Check mic or sound source connection.
<b>No Effects</b>	<b>Are the channel EFFECTS controls turned up? Is the master EFFECTS MUTE enabled? Is an effect activated in menu?</b>	Make sure desired effect is selected in Master effect menu. Check the master EFFECTS MUTE. If the LED is illuminated the EFFECTS MUTE is active. Press the EFFECTS MUTE button once to disable. Adjust channel EFFECTS control until audio effect is heard.
<b>Files on USB memory device will not play back</b>	<b>Is the file cued for playback? Are the audio files the proper format?</b>	Make sure once MEDIA SELECT knob is rotated to display desired file the knob is then pressed to cue the file. Make sure your audio files are the correct format. See the list of supported audio formats mentioned previously in this manual.
<b>Loud howling or squeal from speakers</b>	<b>If it goes away when the CHANNEL or MASTER LEVEL controls are turned down, then it is acoustic feedback.</b>	Reduce microphone gain. Reposition microphone behind or farther from speakers.
<b>Sound is distorted</b>	<b>Is the CHANNEL GAIN at a very high setting?</b>	Reduce CHANNEL GAIN and increase MASTER VOLUME

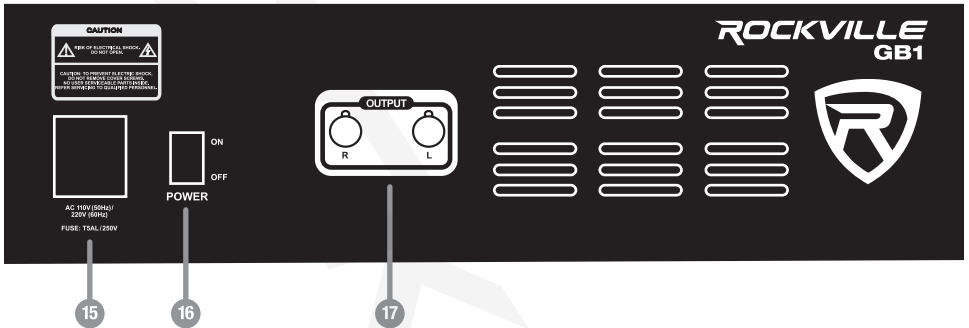
# PANEL DESCRIPTIONS



1. Channel 1 – 3: Each channel features an XLR microphone input and a 1/4" line level input.
2. Channel 4/5: XLR microphone input and L/R 1/4" stereo inputs.
3. Channel 6/7: RCA stereo IN/OUT plug.
4. USB/SD inputs
5. LCD display
6. MP3 controls:
  - Play/Pause
  - Mode: press this button to switch between input sources.
  - Repeat: pres once to repeat one, again to repeat all, again to enter random mode.
  - Previous track/Volume down: Short press to lower volume, press and hold to return to previous track.
  - Next track/Volume up: Short press to raise volume, press and hold to move to next track.
7. Channel controls:
  - High level control: Adjust high frequencies.
  - Low level control: Adjust low frequencies.
  - Reverb control: Adjust the effect level of each channel.
8. Gain slider: Adjust signal level to the mixer.

# PANEL DESCRIPTIONS

9. Clipping LED indicator: Indicates when the amp is overdriven.
10. USB/SD volume control: Adjusts USB/SD volume input.
11. Digital Effects Processor: Has 16 presets that can generate a variety of effects. See Effects Usage section on page 8.
12. L/R LED level indicators.
13. L/R Master volume sliders.
14. 7 band graphic equalizer.



15. IEC AC power socket with user serviceable fuse compartment.
16. Power switch
17. ¼" L/R stereo outputs

# FEATURES AND SPECIFICATIONS

Compact and light weight system delivers distortion free sound even at extreme SPL

Two 4 Ohm high power long-throw 10" woofers with 1.5" aluminum voice coil and 60oz magnets provide incredibly deep bass and acoustic power

Power: 300 Watt RMS / 600 Watts Program Power / 1200 Watts Peak

Frequency Response: 20Hz – 20kHz

Maximum SPL @1w/1m: 105dB peak / 110dB continuous

State-of-the-art 1.75" crystal piezo compression horn tweeter

Ultra-wide dispersion, 40° large-format horizontal wave guide horn molded directly into cabinet

LCD Display

USB / SD Input with independent volume control

MP3 Playback

Bluetooth connectivity

Digital sound processor with 16 digital effects

5 band graphic equalizer

7 Channel Mixer

Channels 1 - 3: Mono Mic / Line input via XLR & Balanced ¼" TRS

Channels 4 - 5: Mono Mic / Stereo Line input via XLR & Balanced Dual ¼" TRS

Channels 6 - 7: Stereo RCA input / output

Master left / right volume controls

Clip limit indicator for each channel

Reverb, EQ (high / low), and Gain controls for each channel

Two folding speaker stands

Two 10ft speaker cables

One microphone with cable

Storage compartments for accessories

Ergonomically shaped retractable handle for ease of transport.

High-quality components and exceptionally rugged high impact ABS construction

## FEDERAL COMMUNICATIONS COMMISSION COMPLIANCE INFORMATION

Responsible party name: Rockville

Address: 600 Bayview Ave,  
Entrance A,  
Inwood, NY 11096

Hereby declares that the product Rockville GB1 portable system complies with FCC rules as mentioned in the following paragraph:

This device complies with Part 15 of the FCC rules. Operation is subject to the following two conditions: (1) this device may not cause harmful interference, and (2) this device must accept any interference received, including interference that may cause undesired operation.

Note: This equipment has been tested and found to comply with the limits for a Class B digital device, pursuant to Part 15 of the FCC rules. These limits are designed to provide reasonable protection against harmful interference in a residential installation. This equipment generates, uses and can radiate radio frequency energy and, if not installed and used in accordance with the instructions, may cause harmful interference to radio communications. However, there is no guarantee that interference will not occur in a particular installation. If this equipment does cause harmful interference to radio or television reception, which can be determined by turning the equipment off and on, the user is encouraged to try to correct the interference by one or more of the following measures:

- Reorient or relocate the receiving antenna.
- Increase the separation between the equipment and receiver.
- Connect the equipment to an outlet on a circuit different from that to which the receiver is connected.
- Consult the dealer or an experienced radio/TV technician for help.

ROCKWELL

Visit us at:

**RockvilleAudio.com**