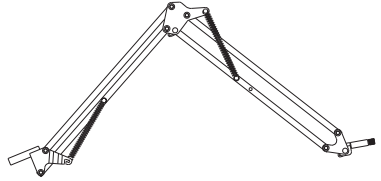
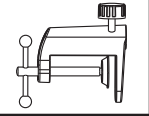



# ROCKVILLE

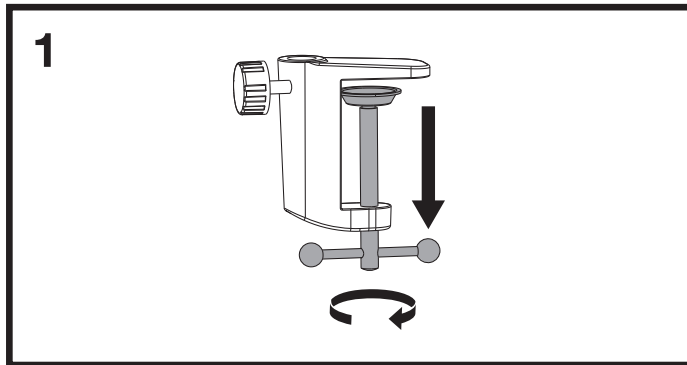
## DMS30 ASSEMBLY INSTRUCTIONS

Thank you for purchasing the DMS30 Studio Desk Clamp Microphone Stand w/Boom Arm. Please read these instructions carefully before use. Make sure all parts are included. If any parts are missing please contact our technical help line at 1-646-758-0144, Monday through Friday, 9am to 5pm EST.

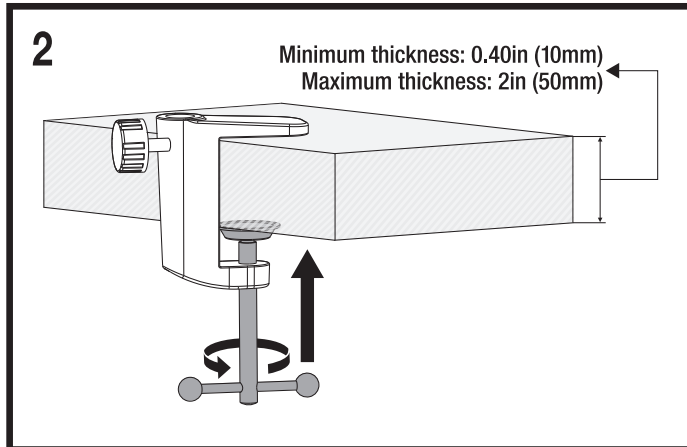
- Articulating microphone boom arm
- Suitable for studios, broadcasting, podcasting, Gaming and more
- C-shape desk clamp made of aluminum alloy
- Fits any desk less than 2 inches thick
- You can set the base of the stand on the desk firmly and adjust to your favorite position
- ABS plastic mic clip
- High quality steel frame is sturdy and durable
- Internal springs for silent and effortless positioning
- Weight: 1.01 Lbs
- Top arm: 14"
- Bottom arm: 14"

Articulated Boom Arm		1 pc	Desk Clamp		1 pc
			Mic Clip		1 pc

### Attaching the Desk Clamp:

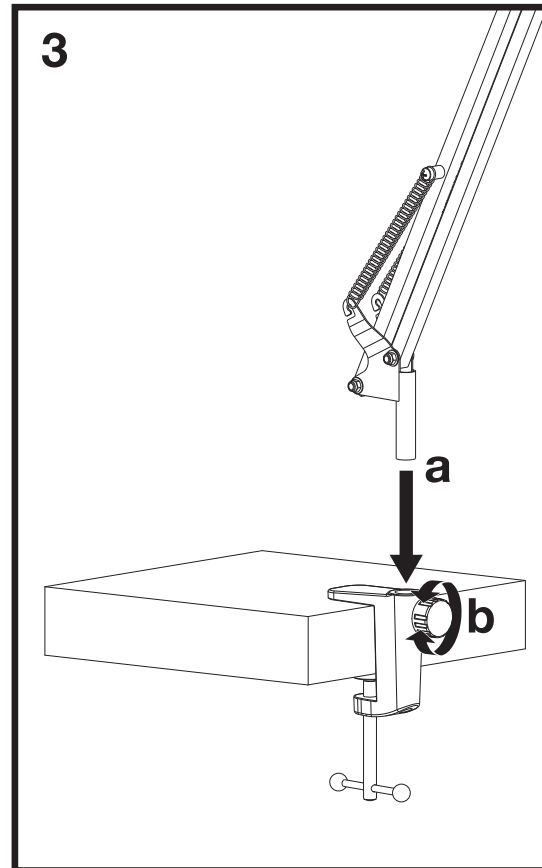


Turn the metal handle clockwise to open the clamp.



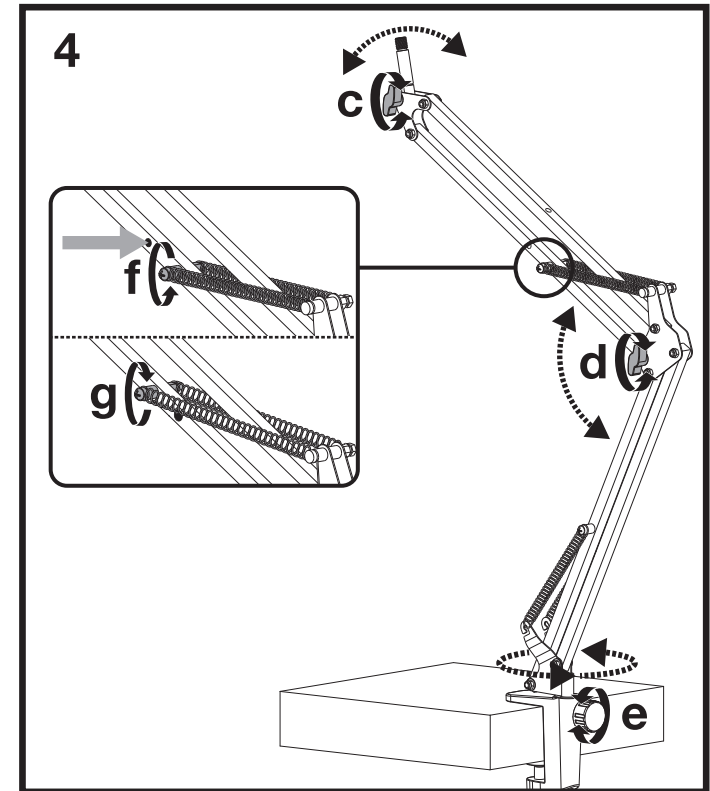
Attach the clamp to the installation area by turning the metal handle counter-clockwise until the bottom of the clamp is tightly secured.

### Installing the Boom Arm:



Insert the boom arm assembly into the corresponding opening on the clamp (fig. a). Turn the knob to secure the boom arm assembly (fig. b). Do not overtighten.

### Adjusting the Boom Arm:



To adjust the position of the microphone (fig. c), adjust the angle of the boom arm (fig. d), or to rotate the boom arm (fig. e): loosen the corresponding knob, make your adjustments, then tighten the knob. Do not overtighten. The top arm springs can be adjusted to bear more weight: undo the spring retaining screws (fig. f) and move them to the second position holes (indicated by the grey arrow). Tighten the screws to secure the springs (fig. g).